

PKM2 Rabbit mAb

Catalog No: #56105

Package Size: #56105-1 50ul #56105-2 100ul

Orders: order@signalwayantibody.com

Support: tech@signalwayantibody.com

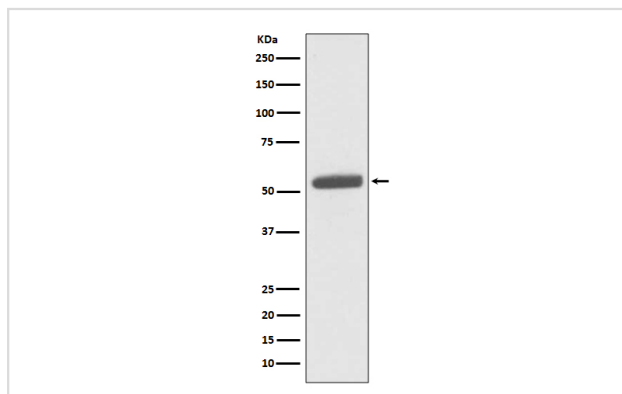
Description

Product Name	PKM2 Rabbit mAb
Host Species	Rabbit
Clonality	Monoclonal
Isotype	Rabbit IgG
Purification	Affinity-chromatography
Applications	WB IHC ICC/IF FC
Species Reactivity	Human Mouse Rat
Specificity	PKM2 Antibody detects endogenous levels of PKM2
Immunogen Description	A synthesized peptide derived from human PKM2
Other Names	CTHBP; Cytosolic thyroid hormone binding protein; KPYM; OIP 3; Oip3; OIP3; OPA interacting protein 3; p58; PK Muscle type; muscle type; PK2; Pk3; PKM;
Accession No.	Uniprot:P14618
Uniprot	P14618
Calculated MW	58kDa
Formulation	Rabbit IgG in phosphate buffered saline , pH 7.4, 150mM NaCl, 0.02% sodium azide and 50% glycerol.
Storage	Store at +4 Λ C short term. Store at -20 Λ C long term. Avoid freeze / thaw cycle.

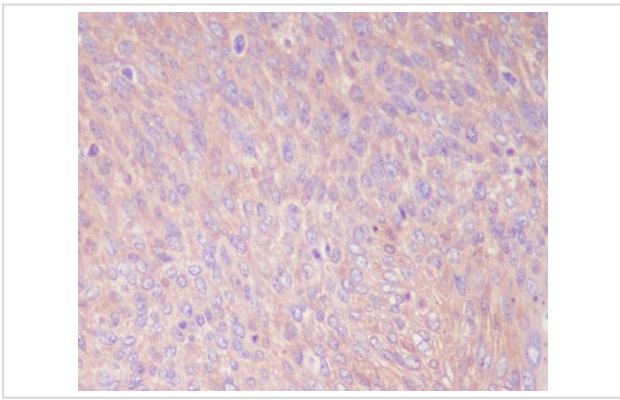
Application Details

WB:1:1000~1:2000IHC:1:50~1:200ICC/IF:1:50~1:200FC:1:50

Images



Western blot analysis of PKM2 expression in HeLa cell lysate.



Immunohistochemical analysis of paraffin-embedded human cervix cancer, using PKM2 Antibody.

Product Description

Pyruvate kinase is a glycolytic enzyme that catalyses the conversion of phosphoenolpyruvate to pyruvate. PKM2 is shown to be essential for aerobic glycolysis in tumors, known as the Warburg effect.

Note: This product is for in vitro research use only