

Cyclin A1/A2 Rabbit mAb

Catalog No: #56107

Package Size: #56107-1 50ul #56107-2 100ul

Orders: order@signalwayantibody.com

Support: tech@signalwayantibody.com

Description

Product Name	Cyclin A1/A2 Rabbit mAb
Host Species	Rabbit
Clonality	Monoclonal
Isotype	Rabbit IgG
Purification	Affinity-chromatography
Applications	WB IHC IP
Species Reactivity	Human
Specificity	Cyclin A1/A2 Antibody detects endogenous levels of Cyclin A1/A2
Immunogen Description	A synthesized peptide derived from human Cyclin A1/A2
Other Names	CCN1; CCNA; CCNA1; CCNA2; CT146; Cyclin-A; Cyclin-A1; Cyclin-A2;
Accession No.	Uniprot:P20248/P78396
Uniprot	P20248/P78396
Calculated MW	52,49kDa
Formulation	Rabbit IgG in phosphate buffered saline , pH 7.4, 150mM NaCl, 0.02% sodium azide and 50% glycerol.
Storage	Store at +4Λ C short term. Store at -20Λ C long term. Avoid freeze / thaw cycle.

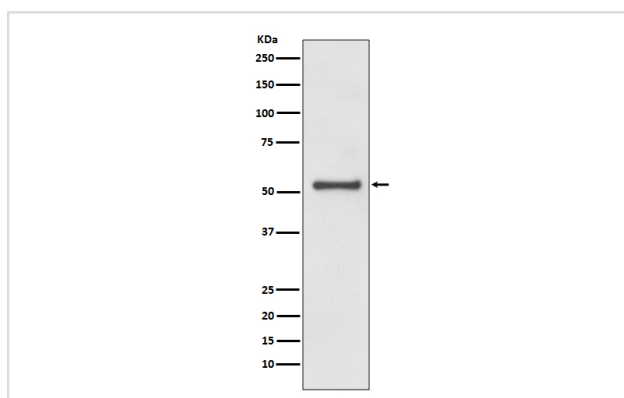
Application Details

WB:1:500~1:1000

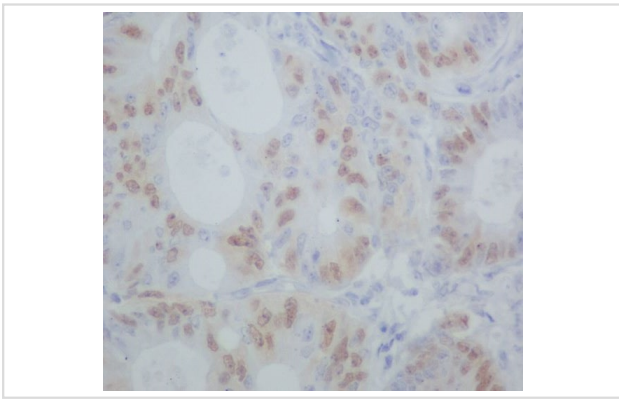
IHC:1:100~1:500

IP:1:50

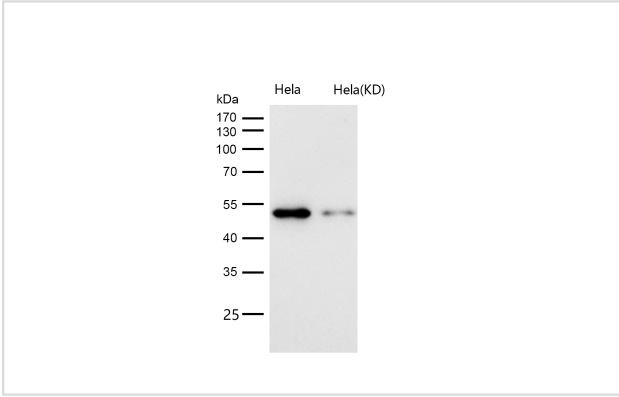
Images



Western blot analysis of Cyclin A1/A2 expression in HeLa cell lysate.



Immunohistochemical analysis of paraffin-embedded human colon cancer, using Cyclin A1/A2 Antibody.



All lanes use the Antibody at 1:500 dilution for 1 hour at room temperature.

Product Description

May primarily function in the control of the germline meiotic cell cycle and additionally in the control of mitotic cell cycle in some somatic cells. Essential for the control of the cell cycle at the G1/S (start) and the G2/M (mitosis) transitions.

Note: This product is for in vitro research use only