

MEK3/MEK6 Rabbit mAb

Catalog No: #56110

Package Size: #56110-1 50ul #56110-2 100ul

Orders: order@signalwayantibody.com

Support: tech@signalwayantibody.com

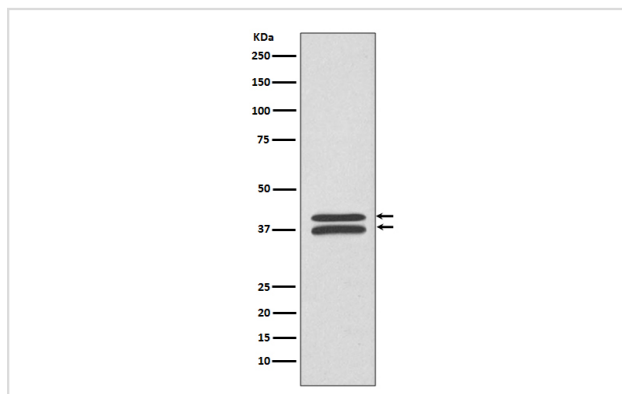
Description

Product Name	MEK3/MEK6 Rabbit mAb
Host Species	Rabbit
Clonality	Monoclonal
Isotype	Rabbit IgG
Purification	Affinity-chromatography
Applications	WB IHC ICC/IF IP FC
Species Reactivity	Human Mouse Rat
Specificity	MEK3/MEK6 Antibody detects endogenous levels of MEK3/MEK6
Immunogen Description	A synthesized peptide derived from human MEK3/MEK6
Other Names	MEK6; MKK6; MAPKK6; PRKMK6; SAPKK3; MAP2K6; MEK3; MAP kinase kinase 3; MAPKK3; MAPK/ERK kinase 3;
Accession No.	Uniprot:P46734/P52564
Uniprot	P46734/P52564
Calculated MW	39,37kDa
Formulation	Rabbit IgG in phosphate buffered saline , pH 7.4, 150mM NaCl, 0.02% sodium azide and 50% glycerol.
Storage	Store at +4Λ C short term. Store at -20Λ C long term. Avoid freeze / thaw cycle.

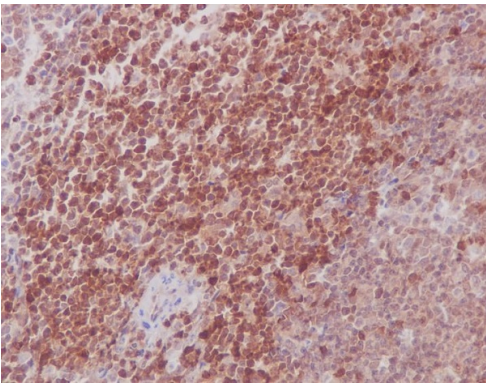
Application Details

WB:1:500~1:1000IHC:1:50~1:200ICC/IF:1:100~1:500IP:1:50FC:1:50

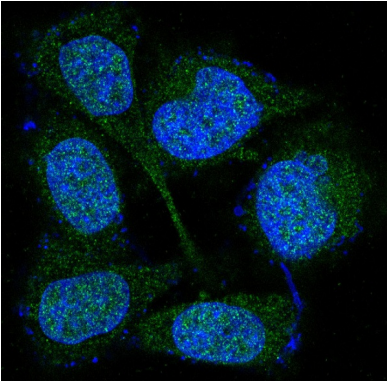
Images



Western blot analysis of MEK3/MEK6 expression in HeLa cell lysate.



Immunohistochemical analysis of paraffin-embedded mouse spleen, using MEK3/MEK6 Antibody.



Immunofluorescent analysis of HeLa cells, using MEK3/MEK6 Antibody.

Product Description

Dual specificity kinase. Is activated by cytokines and environmental stress in vivo. Catalyzes the concomitant phosphorylation of a threonine and a tyrosine residue in the MAP kinase p38.

Note: This product is for in vitro research use only