

14-3-3 Rabbit mAb

Catalog No: #56111

Package Size: #56111-1 50ul #56111-2 100ul

Orders: order@signalwayantibody.com

Support: tech@signalwayantibody.com

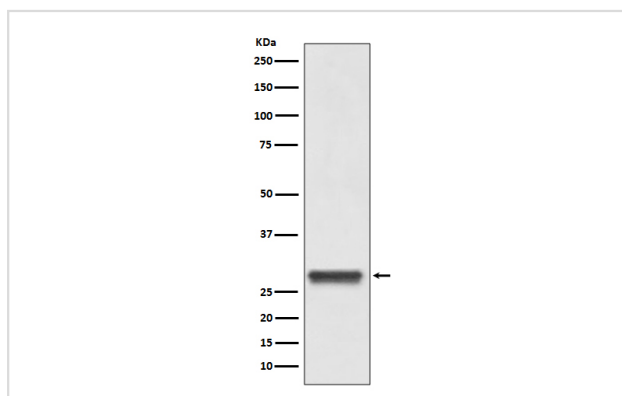
Description

Product Name	14-3-3 Rabbit mAb
Host Species	Rabbit
Clonality	Monoclonal
Isotype	Rabbit IgG
Purification	Affinity-chromatography
Applications	WB IHC FC
Species Reactivity	Human Mouse Rat
Specificity	14-3-3 Antibody detects endogenous levels of 14-3-3
Immunogen Description	A synthesized peptide derived from human 14-3-3
Other Names	14 3 3 protein beta; 14 3 3 protein beta/alpha; 14 3 3 protein zeta; 14 3 3 zeta; GW128; HS1; KCIP 1; N-terminally processed; YWHAB; YWHAD; YWHAZ;
Accession No.	Uniprot:P31946/P63104
Uniprot	P31946/P63104
Calculated MW	28kDa
Formulation	Rabbit IgG in phosphate buffered saline , pH 7.4, 150mM NaCl, 0.02% sodium azide and 50% glycerol.
Storage	Store at +4Λ C short term. Store at -20Λ C long term. Avoid freeze / thaw cycle.

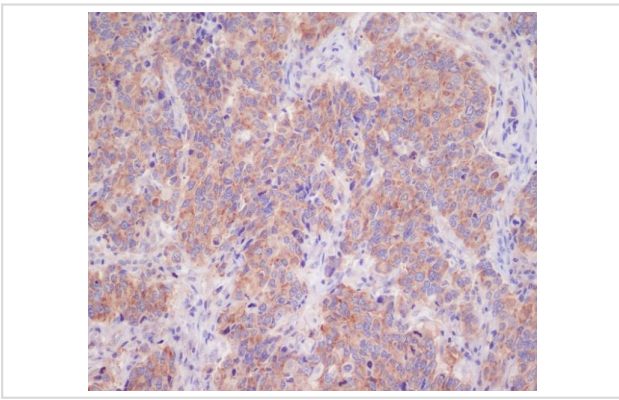
Application Details

WB:1:500~1:1000IHC:1:50~1:200FC:1:50

Images



Western blot analysis of 14-3-3 expression in HeLa lysate.



Immunohistochemical analysis of paraffin-embedded human breast cancer, using 14-3-3 Antibody.

Product Description

Adapter protein implicated in the regulation of a large spectrum of both general and specialized signaling pathways. Binds to a large number of partners, usually by recognition of a phosphoserine or phosphothreonine motif. Binding generally results in the modulation of the activity of the binding partner. Negative regulator of osteogenesis.

Note: This product is for in vitro research use only