

CDCA3 Rabbit mAb

Catalog No: #56115

Package Size: #56115-1 50ul #56115-2 100ul

Orders: order@signalwayantibody.com

Support: tech@signalwayantibody.com

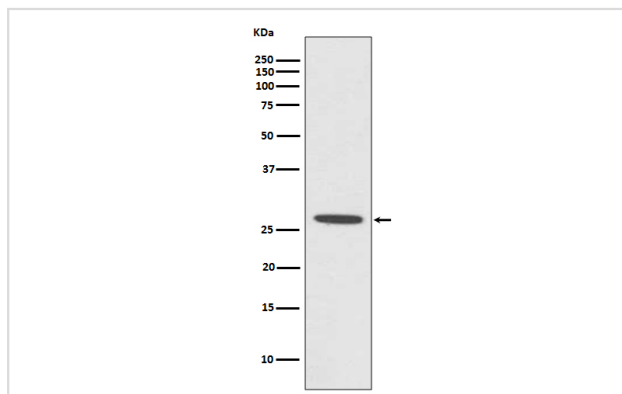
Description

Product Name	CDCA3 Rabbit mAb
Host Species	Rabbit
Clonality	Monoclonal
Isotype	Rabbit IgG
Purification	Affinity-chromatography
Applications	WB ICC/IF
Species Reactivity	Human Mouse Rat
Specificity	CDCA3 Antibody detects endogenous levels of total CDCA3
Immunogen Description	A synthesized peptide derived from human CDCA3
Other Names	Cell division cycle-associated protein 3; Trigger of mitotic entry protein 1; TOME-1; Gene-rich cluster protein C8; CDCA3; C8; GRCC8; TOME1;
Accession No.	Uniprot:Q99618
Uniprot	Q99618
Calculated MW	26kDa
Formulation	Rabbit IgG in phosphate buffered saline , pH 7.4, 150mM NaCl, 0.02% sodium azide and 50% glycerol.
Storage	Store at +4 Λ C short term. Store at -20 Λ C long term. Avoid freeze / thaw cycle.

Application Details

WB:1:500~1:1000 ICC/IF:1:50~1:100

Images



Western blot analysis of CDCA3 expression in MCF7 cell lysate.

Product Description

F-box-like protein which is required for entry into mitosis. Acts by participating in E3 ligase complexes that mediate the ubiquitination and degradation of WEE1 kinase at G2/M phase (By similarity).

Note: This product is for in vitro research use only