

CDCA5 Rabbit mAb

Catalog No: #56116

Package Size: #56116-1 50ul #56116-2 100ul

Orders: order@signalwayantibody.com

Support: tech@signalwayantibody.com

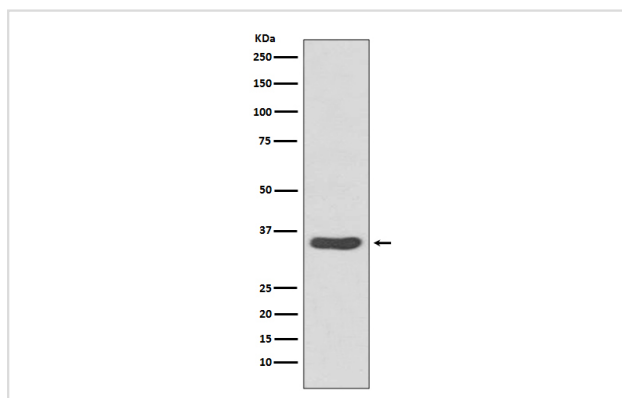
Description

Product Name	CDCA5 Rabbit mAb
Host Species	Rabbit
Clonality	Monoclonal
Isotype	Rabbit IgG
Purification	Affinity-chromatography
Applications	WB IHC ICC/IF FC
Species Reactivity	Human
Specificity	CDCA5 Antibody detects endogenous levels of total CDCA5
Immunogen Description	A synthesized peptide derived from human CDCA5
Other Names	CDCA5; Cell division cycle associated protein 5; Cell division cycle-associated protein 5; p35; Sororin;
Accession No.	Uniprot:Q96FF9
Uniprot	Q96FF9
Calculated MW	35kDa
Formulation	Rabbit IgG in phosphate buffered saline , pH 7.4, 150mM NaCl, 0.02% sodium azide and 50% glycerol.
Storage	Store at +4 Λ C short term. Store at -20 Λ C long term. Avoid freeze / thaw cycle.

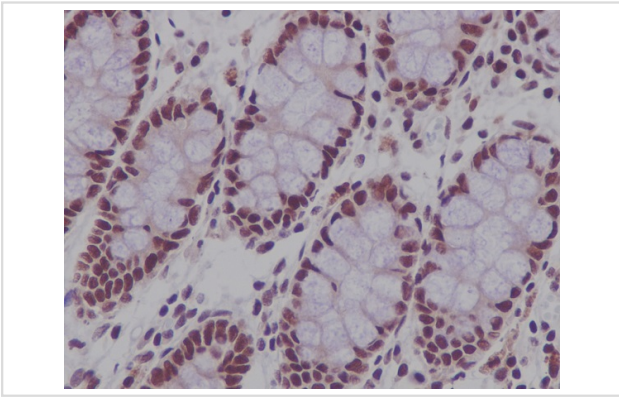
Application Details

WB:1:500~1:2000IHC:1:50~1:200ICC/IF:1:50~1:200FC:1:50

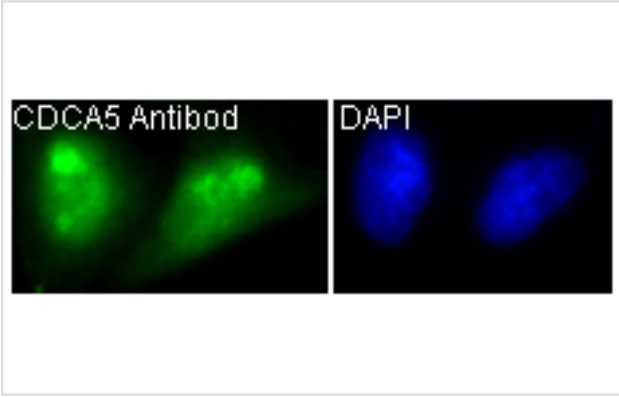
Images



Western blot analysis of CDCA5 expression in Jurkat cell lysate.



Immunohistochemical analysis of paraffin-embedded human colon, using CDCA5 Antibody.



Immunofluorescent analysis of HeLa cells, using CDCA5 Antibody.

Product Description

Regulator of sister chromatid cohesion in mitosis stabilizing cohesin complex association with chromatin. May antagonize the action of WAPAL which stimulates cohesin dissociation from chromatin. Cohesion ensures that chromosome partitioning is accurate in both meiotic and mitotic cells and plays an important role in DNA repair. Required for efficient DNA double-stranded break repair.

Note: This product is for in vitro research use only