

## Sumo2/3 Rabbit mAb

Catalog No: #56118

Package Size: #56118-1 50ul #56118-2 100ul

Orders: order@signalwayantibody.com

Support: tech@signalwayantibody.com

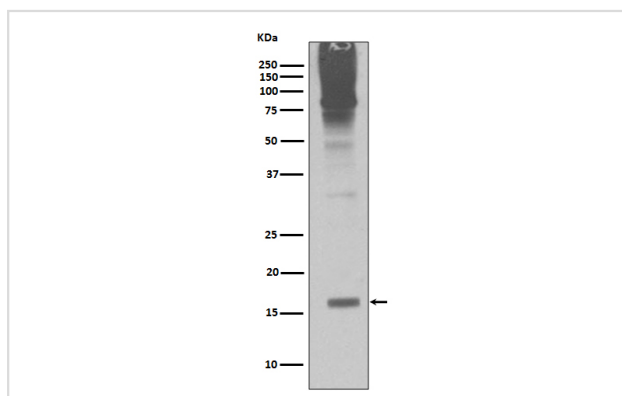
## Description

Product Name	Sumo2/3 Rabbit mAb
Host Species	Rabbit
Clonality	Monoclonal
Isotype	Rabbit IgG
Purification	Affinity-chromatography
Applications	WB IHC ICC/IF
Species Reactivity	Human Mouse Rat
Specificity	Sumo2/3 Antibody detects endogenous levels of total Sumo2/3
Immunogen Description	A synthesized peptide derived from human Sumo2/3
Other Names	SUMO2; HSMT3; SMT3 homolog 2; SMT3A; Sentrin 2; Smt3B; SMT3H2; SUMO-2; SUMO-3; Sentrin-2; Ubiquitin-like protein SMT3A; Ubiquitin-like protein SMT3B;
Accession No.	Uniprot:P61956 /P55854
Uniprot	P61956 /P55854
Calculated MW	16kDa
Formulation	Rabbit IgG in phosphate buffered saline , pH 7.4, 150mM NaCl, 0.02% sodium azide and 50% glycerol.
Storage	Store at +4 $\Lambda$ C short term. Store at -20 $\Lambda$ C long term. Avoid freeze / thaw cycle.

## Application Details

WB:1:500~1:2000IHC:1:50~1:200ICC/IF:1:50~1:200

## Images



Western blot analysis of Sumo2/3 expression in Jurkat cell lysate.

## Product Description

Small ubiquitin-related modifier 1, 2 and 3 (SUMO-1, -2 and -3) are members of the ubiquitin-like protein family. The covalent attachment of the SUMO-1, -2 or -3 (SUMOylation) to target proteins is analogous to ubiquitination. This post-translational modification is a reversible, multi-step process that is initiated by cleaving a precursor protein to a mature protein.

---

Note: This product is for in vitro research use only