

AKT1/2 Rabbit mAb

Catalog No: #56120

Package Size: #56120-1 50ul #56120-2 100ul

Orders: order@signalwayantibody.com

Support: tech@signalwayantibody.com

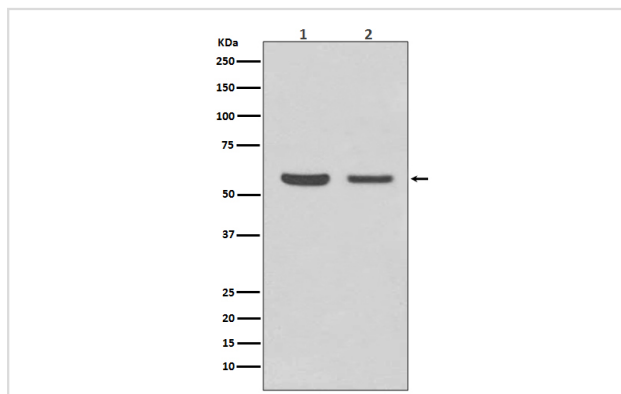
Description

Product Name	AKT1/2 Rabbit mAb
Host Species	Rabbit
Clonality	Monoclonal
Isotype	Rabbit IgG
Purification	Affinity-chromatography
Applications	WB IHC ICC/IF FC
Species Reactivity	Human Mouse Rat
Specificity	AKT1/2 Antibody detects endogenous levels of total AKT1/2
Immunogen Description	A synthesized peptide derived from human AKT1/2
Other Names	AKT1; AKT1 kinase; AKT2; AKT2 kinase; C AKT; CWS6; Oncogene AKT1; PKB alpha; PKB beta; PRKBA; PRKBB;
Accession No.	Uniprot:P31749/P31751
Uniprot	P31749/P31751
Calculated MW	56kDa
Formulation	Rabbit IgG in phosphate buffered saline , pH 7.4, 150mM NaCl, 0.02% sodium azide and 50% glycerol.
Storage	Store at +4Λ C short term. Store at -20Λ C long term. Avoid freeze / thaw cycle.

Application Details

WB:1:500~1:2000IHC:1:50~1:200ICC/IF:1:50~1:200FC:1:50

Images



Western blot analysis of AKT1/2 expression in (1) HeLa cell lysate; (2) NIH/3T3 cell lysate.

Product Description

The serine/threonine kinase AKT (protein kinase B or PKB) has a central role in the regulation of several signaling pathways controlling cell proliferation, apoptosis, angiogenesis, and diabetes.

Note: This product is for in vitro research use only