

CD3 zeta Rabbit mAb

Catalog No: #56124

Package Size: #56124-1 50ul #56124-2 100ul

Orders: order@signalwayantibody.com

Support: tech@signalwayantibody.com

Description

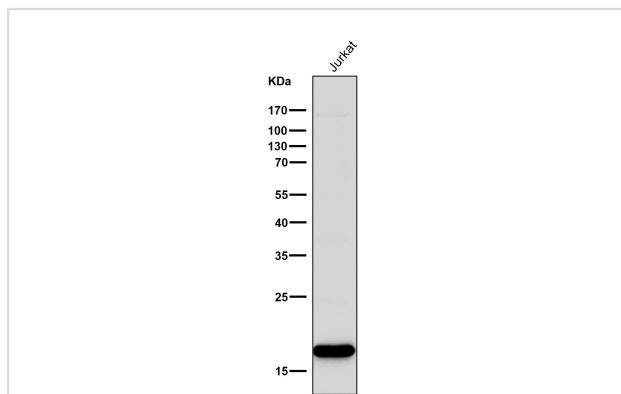
Product Name	CD3 zeta Rabbit mAb
Host Species	Rabbit
Clonality	Monoclonal
Isotype	Rabbit IgG
Purification	Affinity-chromatography
Applications	ICC/IF FC
Species Reactivity	Human
Specificity	CD3 zeta Antibody detects endogenous levels of total CD3 zeta
Immunogen Description	A synthesized peptide derived from human CD3 zeta
Other Names	CD3-zeta; T-cell receptor T3 zeta chain; T3Z; TCRZ; CD247;
Accession No.	Uniprot:P20963
Uniprot	P20963
Calculated MW	kDa
Storage	Rabbit IgG in phosphate buffered saline , pH 7.4, 150mM NaCl, 0.02% sodium azide and 50% glycerol. Store at +4°C short term. Store at -20°C long term. Avoid freeze / thaw cycle.

Application Details

ICC/IF:1:100~1:200

FC:1:20

Images



All lanes use the Antibody at 1:1K dilution for 1 hour at room temperature.

Product Description

Defects in CD3D are a cause of severe combined immunodeficiency autosomal recessive T-cell-negative/B-cell-positive/NK-cell-positive (T(-)/B(+)/NK(+)) SCID [MIM:608971]. A form of severe combined immunodeficiency (SCID), a genetically and clinically heterogeneous group of rare congenital disorders characterized by impairment of both humoral and cell-mediated immunity, leukopenia, and low or absent antibody levels.

Note: This product is for in vitro research use only