

TGF beta 1 Rabbit mAb

Catalog No: #56126

Package Size: #56126-1 50ul #56126-2 100ul

Orders: order@signalwayantibody.com

Support: tech@signalwayantibody.com

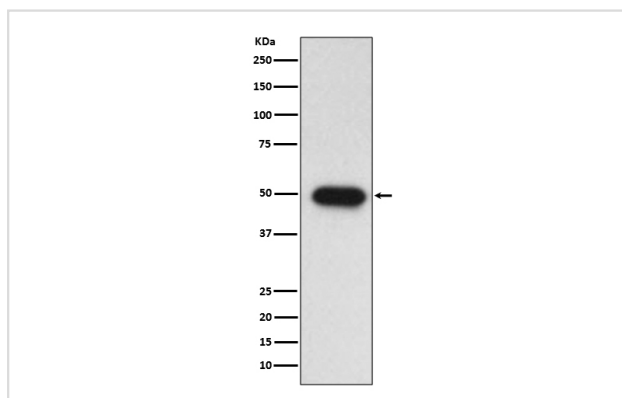
Description

Product Name	TGF beta 1 Rabbit mAb
Host Species	Rabbit
Clonality	Monoclonal
Isotype	Rabbit IgG
Purification	Affinity-chromatography
Applications	WB
Species Reactivity	Human
Specificity	TGF beta 1 Antibody detects endogenous levels of total TGF beta 1
Immunogen Description	A synthesized peptide derived from human TGF beta 1
Other Names	CED; diaphyseal dysplasia 1, progressive; DPD1; TGF-beta 1; TGFB1;
Accession No.	Uniprot:P01137
Uniprot	P01137
Calculated MW	48kDa
Formulation	Rabbit IgG in phosphate buffered saline , pH 7.4, 150mM NaCl, 0.02% sodium azide and 50% glycerol.
Storage	Store at +4Λ C short term. Store at -20Λ C long term. Avoid freeze / thaw cycle.

Application Details

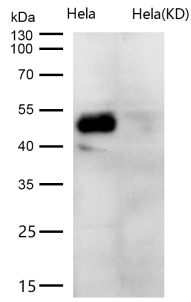
WB:1:500~1:2000

Images



Western blot analysis of TGF beta 1 expression in A549 lysate.

All lanes use the Antibody at 1:1K dilution for 1 hour at room temperature.



Product Description

Multifunctional protein that controls proliferation, differentiation and other functions in many cell types. Many cells synthesize TGFB1 and have specific receptors for it. It positively and negatively regulates many other growth factors. It plays an important role in bone remodeling as it is a potent stimulator of osteoblastic bone formation, causing chemotaxis, proliferation and differentiation in committed osteoblasts.

Note: This product is for in vitro research use only