

TIMP1 Rabbit mAb

Catalog No: #56127

Package Size: #56127-1 50ul #56127-2 100ul

Orders: order@signalwayantibody.com

Support: tech@signalwayantibody.com

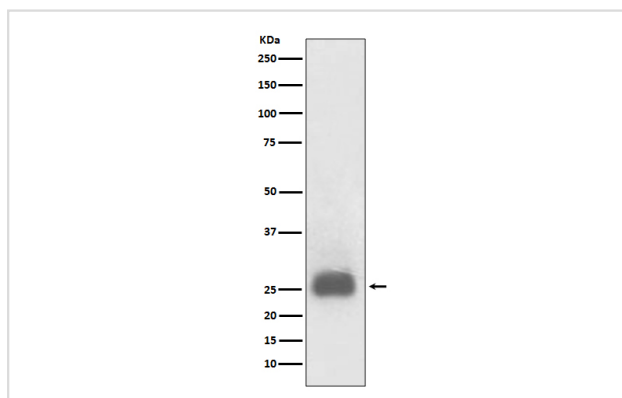
Description

Product Name	TIMP1 Rabbit mAb
Host Species	Rabbit
Clonality	Monoclonal
Isotype	Rabbit IgG
Purification	Affinity-chromatography
Applications	WB IHC
Species Reactivity	Human
Specificity	TIMP1 Antibody detects endogenous levels of total TIMP1
Immunogen Description	A synthesized peptide derived from human TIMP1
Other Names	CLGI; Collagenase inhibitor; EPA; EPO; HCI; Metalloproteinase inhibitor 1; TIMP; TIMP1;
Accession No.	Uniprot:P01033
Uniprot	P01033
Calculated MW	26kDa
Formulation	Rabbit IgG in phosphate buffered saline , pH 7.4, 150mM NaCl, 0.02% sodium azide and 50% glycerol.
Storage	Store at +4Λ C short term. Store at -20Λ C long term. Avoid freeze / thaw cycle.

Application Details

WB:1:500~1:1000IHC:1:50~1:200

Images



Western blot analysis of TIMP1 expression in HL60 cell lysate treated with TPA.

Product Description

TIMP1 Complexes with metalloproteinases (such as collagenases) and irreversibly inactivates them by binding to their catalytic zinc cofactor. Also mediates erythropoiesis in vitro; but, unlike IL-3, it is species-specific, stimulating the growth and differentiation of only human and murine erythroid progenitors. Known to act on MMP-1, MMP-2, MMP-3, MMP-7, MMP-8, MMP-9, MMP-10, MMP-11, MMP-12, MMP-13 and MMP-16.

Note: This product is for in vitro research use only