

Mitofusin 2 Rabbit mAb

Catalog No: #56132

Package Size: #56132-1 50ul #56132-2 100ul

Orders: order@signalwayantibody.com

Support: tech@signalwayantibody.com

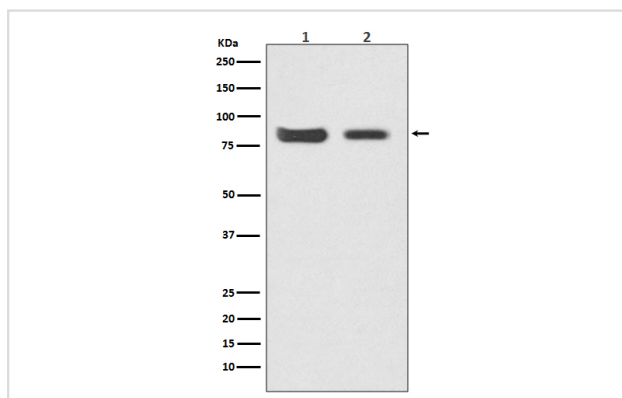
Description

Product Name	Mitofusin 2 Rabbit mAb
Host Species	Rabbit
Clonality	Monoclonal
Isotype	Rabbit IgG
Purification	Affinity-chromatography
Applications	WB IHC ICC/IF
Species Reactivity	Human Mouse Rat
Specificity	Mitofusin 2 Antibody detects endogenous levels of total Mitofusin 2
Immunogen Description	A synthesized peptide derived from human Mitofusin 2
Other Names	CMT2A2; CMT2A; CPRP1; MFN2; Hyperplasia suppressor; MARF; Mitofusin 2; HSG; Mitofusin-2;
Accession No.	Uniprot:O95140
Uniprot	O95140
Calculated MW	80kDa
Formulation	Rabbit IgG in phosphate buffered saline , pH 7.4, 150mM NaCl, 0.02% sodium azide and 50% glycerol.
Storage	Store at +4 Λ C short term. Store at -20 Λ C long term. Avoid freeze / thaw cycle.

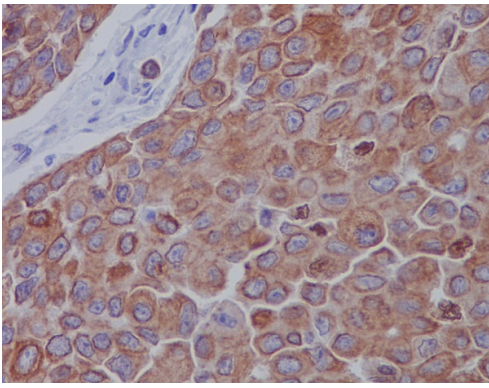
Application Details

WB:1:500~1:2000IHC:1:50~1:200ICC/IF:1:50~1:200

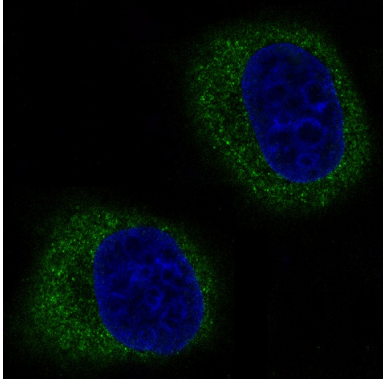
Images



Western blot analysis of Mitofusin 2 expression in (1) HeLa cell lysate; (2) Mouse kidney lysate.



Immunohistochemical analysis of paraffin-embedded human breast carcinoma, using Mitofusin 2 Antibody.



Immunofluorescent analysis of HeLa cells, using Mitofusin 2 Antibody.

Product Description

Plays an important role in the regulation of vascular smooth muscle cell proliferation. Involved in the clearance of damaged mitochondria via selective autophagy (mitophagy). Is required for PARK2 recruitment to dysfunctional mitochondria.

Note: This product is for in vitro research use only