

## Ras Rabbit mAb

Catalog No: #56133

Package Size: #56133-1 50ul #56133-2 100ul

Orders: order@signalwayantibody.com

Support: tech@signalwayantibody.com

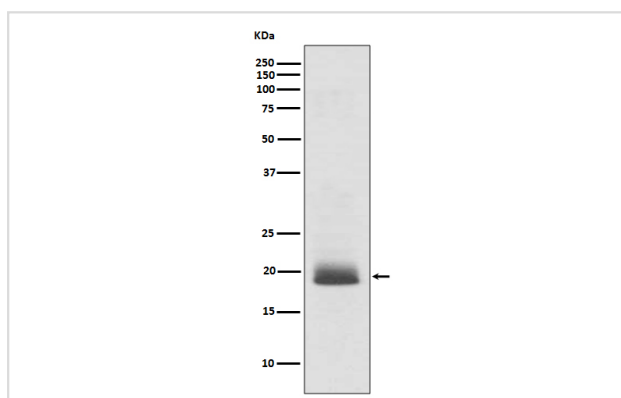
## Description

Product Name	Ras Rabbit mAb
Host Species	Rabbit
Clonality	Monoclonal
Isotype	Rabbit IgG
Purification	Affinity-chromatography
Applications	WB ICC/IF IP
Species Reactivity	Human Mouse Rat
Specificity	Ras Antibody detects endogenous levels of total Ras
Immunogen Description	A synthesized peptide derived from human Ras
Other Names	GTPase HRas; GTPase KRas; GTPase NRas; H-Ras-1; H-RASIDX; Ha-Ras; HAMSIV; HRAS; K RAS2A; K RAS2B; K RAS4A; K RAS4B; K-RAS; KRAS; N-RAS; N-terminally processed; NRAS; p21ras; RASH1; RASK2;
Accession No.	Uniprot:P01111/P01112/P01116
Uniprot	P01111/P01112/P01116
Calculated MW	22kDa
Formulation	Rabbit IgG in phosphate buffered saline , pH 7.4, 150mM NaCl, 0.02% sodium azide and 50% glycerol.
Storage	Store at +4 $\Lambda$ C short term. Store at -20 $\Lambda$ C long term. Avoid freeze / thaw cycle.

## Application Details

WB:1:500~1:2000ICC/IF:1:50~1:200IP:1:50

## Images



Western blot analysis of Ras expression in SH-SY5Y cell lysate.

## Product Description

The 21 kDa guanine-nucleotide binding proteins (K-Ras, H-Ras, and N-Ras) cycle between active (GTP-bound) and inactive (GDP-bound) forms. Ras proteins bind GDP/GTP and possess intrinsic GTPase activity.

---

Note: This product is for in vitro research use only