

MHC class I Rabbit mAb

Catalog No: #56137

Package Size: #56137-1 50ul #56137-2 100ul

Orders: order@signalwayantibody.com

Support: tech@signalwayantibody.com

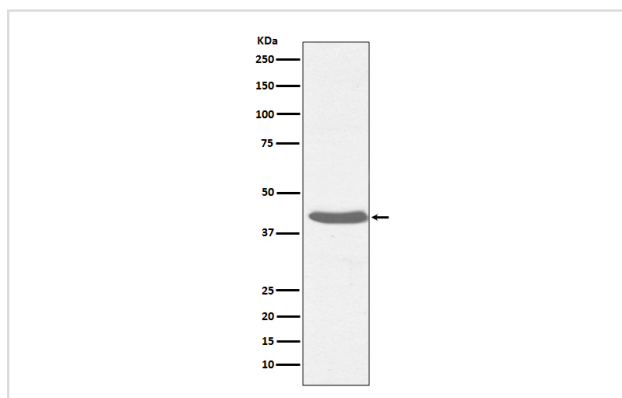
Description

Product Name	MHC class I Rabbit mAb
Host Species	Rabbit
Clonality	Monoclonal
Isotype	Rabbit IgG
Purification	Affinity-chromatography
Applications	WB IHC ICC/IF FC
Species Reactivity	Human
Specificity	MHC class I Antibody detects endogenous levels of total MHC class I
Immunogen Description	A synthesized peptide derived from human MHC class I
Other Names	HLA class I histocompatibility; HLA A; HLA B;
Accession No.	Uniprot:P30443/P01889/P01891/P01892/P13746/P16188/P30450
Uniprot	P30443/P01889/P01891/P01892/P13746/P16188/P30450
Calculated MW	41kDa
Formulation	Rabbit IgG in phosphate buffered saline , pH 7.4, 150mM NaCl, 0.02% sodium azide and 50% glycerol.
Storage	Store at +4Λ C short term. Store at -20Λ C long term. Avoid freeze / thaw cycle.

Application Details

WB:1:500~1:2000IHC:1:50~1:200ICC/IF:1:50~1:200FC:1:50

Images



Western blot analysis of MHC class I expression in Raji cell lysate.

Product Description

Major histocompatibility complex (MHC) molecules form an integral part of the immune response system. They are cell-surface receptors that bind peptides and present them to T lymphocytes. HLA-A, -B and -C encode membrane anchored heavy chains which heterodimerize with a light chain (β-2-Microglobulin) to form MHC-I. Polymorphisms yield hundreds of HLA-A, -B and -C alleles.

Note: This product is for in vitro research use only