

IL10 Rabbit mAb

Catalog No: #56138

Package Size: #56138-1 50ul #56138-2 100ul

Orders: order@signalwayantibody.com

Support: tech@signalwayantibody.com

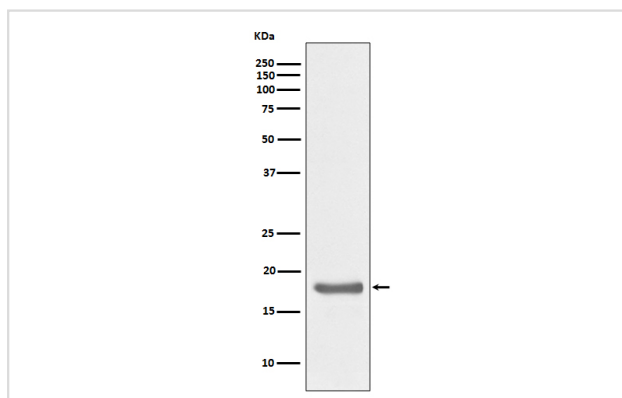
Description

Product Name	IL10 Rabbit mAb
Host Species	Rabbit
Clonality	Monoclonal
Isotype	Rabbit IgG
Purification	Affinity-chromatography
Applications	WB ICC/IF FC
Species Reactivity	Human
Specificity	IL10 Antibody detects endogenous levels of total IL10
Immunogen Description	A synthesized peptide derived from human IL10
Other Names	IL10; CSIF; GVHDS; IL10A; TGIF; Interleukin-10;
Accession No.	Uniprot:P22301
Uniprot	P22301
Calculated MW	18kDa
Formulation	Rabbit IgG in phosphate buffered saline , pH 7.4, 150mM NaCl, 0.02% sodium azide and 50% glycerol.
Storage	Store at +4 Λ C short term. Store at -20 Λ C long term. Avoid freeze / thaw cycle.

Application Details

WB:1:500~1:2000IC/IF:1:50~1:200FC:1:50

Images



Western blot analysis of IL10 expression in Ramos cell lysate.

Product Description

Interleukin-10 (IL-10) is an anti-inflammatory cytokine that is produced by T cells, NK cells, and macrophages. IL-10 initiates signal transduction by binding to a cell surface receptor complex consisting of IL-10 RI and IL-10 RII, leading to the activation of Jak1 and Tyk2 and phosphorylation of Stat3.

Note: This product is for in vitro research use only