

AFP Rabbit mAb

Catalog No: #56141

Package Size: #56141-1 50ul #56141-2 100ul

Orders: order@signalwayantibody.com

Support: tech@signalwayantibody.com

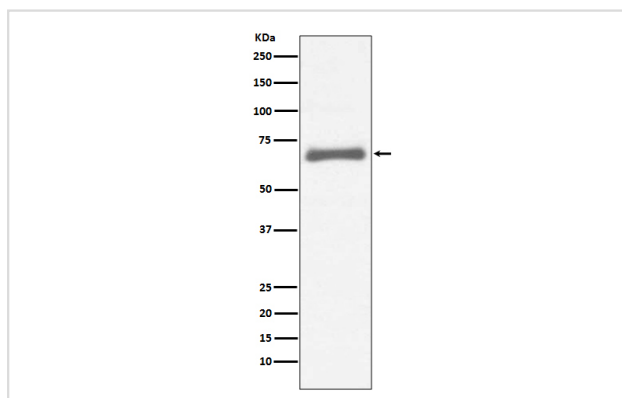
Description

Product Name	AFP Rabbit mAb
Host Species	Rabbit
Clonality	Monoclonal
Isotype	Rabbit IgG
Purification	Affinity-chromatography
Applications	WB IHC ICC/IF IP FC
Species Reactivity	Human
Specificity	AFP Antibody detects endogenous levels of total AFP
Immunogen Description	A synthesized peptide derived from human AFP
Other Names	Alpha fetoglobulin; Alpha fetoprotein precursor; FETA; HPAFP;
Accession No.	Uniprot:P02771
Uniprot	P02771
Calculated MW	68kDa
Formulation	Rabbit IgG in phosphate buffered saline , pH 7.4, 150mM NaCl, 0.02% sodium azide and 50% glycerol.
Storage	Store at +4 Λ C short term. Store at -20 Λ C long term. Avoid freeze / thaw cycle.

Application Details

WB:1:500~1:2000IHC:1:50~1:200ICC/IF:1:50~1:200IP:1:50FC:1:50

Images



Western blot analysis of AFP expression in HepG2 cell lysate.

Product Description

Alpha-fetoprotein (AFP) is a 65 kDa glycoprotein found in the mammalian fetal liver, yolk sac, and GI tract. In normal adult cells, p53 binds to the repressor region of the AFP gene, thereby blocking transcription. Mutations in both p53 and β -catenin are associated with aberrant expression of AFP. Research studies have shown that elevated serum AFP levels are predictive of hepatocellular carcinoma .

Note: This product is for in vitro research use only