

BMP7 Rabbit mAb

Catalog No: #56145

Package Size: #56145-1 50ul #56145-2 100ul

Orders: order@signalwayantibody.com

Support: tech@signalwayantibody.com

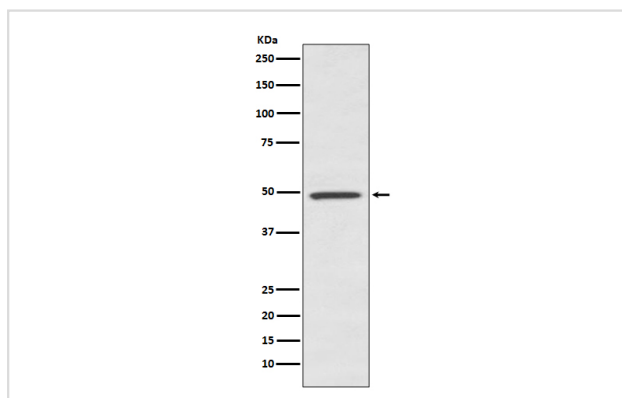
Description

Product Name	BMP7 Rabbit mAb
Host Species	Rabbit
Clonality	Monoclonal
Isotype	Rabbit IgG
Purification	Affinity-chromatography
Applications	WB IP
Species Reactivity	Human Mouse Rat
Specificity	BMP7 Antibody detects endogenous levels of total BMP7
Immunogen Description	A synthesized peptide derived from human BMP7
Other Names	Bmp7; Bone morphogenetic protein 7; Eptotermin alfa; OP 1; Osteogenic protein 1;
Accession No.	Uniprot:P18075
Uniprot	P18075
Calculated MW	49kDa
Formulation	Rabbit IgG in phosphate buffered saline , pH 7.4, 150mM NaCl, 0.02% sodium azide and 50% glycerol.
Storage	Store at +4Λ C short term. Store at -20Λ C long term. Avoid freeze / thaw cycle.

Application Details

WB:1:500~1:2000IP:1:50

Images



Western blot analysis of BMP7 expression in human fetal kidney lysate.

Product Description

Induces cartilage and bone formation. May be the osteoinductive factor responsible for the phenomenon of epithelial osteogenesis. Plays a role in calcium regulation and bone homeostasis.

Note: This product is for in vitro research use only