

## Cathepsin L/V/K/H Rabbit mAb

Catalog No: #56147

Package Size: #56147-1 50ul #56147-2 100ul

Orders: order@signalwayantibody.com

Support: tech@signalwayantibody.com

## Description

Product Name	Cathepsin L/V/K/H Rabbit mAb
Host Species	Rabbit
Clonality	Monoclonal
Isotype	Rabbit IgG
Purification	Affinity-chromatography
Applications	WB IHC ICC/IF FC
Species Reactivity	Human Mouse Rat
Specificity	Cathepsin L/V/K/H Antibody detects endogenous levels of total Cathepsin L/V/K/H
Immunogen Description	A synthesized peptide derived from human Cathepsin L/V/K/H
Other Names	Cathepsin; CTSL; CTSV; CTSK; CTSH;
Accession No.	Uniprot:P07711/O60911/P43235/P09668
Uniprot	P07711/O60911/P43235/P09668
Calculated MW	38kDa
Formulation	Rabbit IgG in phosphate buffered saline , pH 7.4, 150mM NaCl, 0.02% sodium azide and 50% glycerol.
Storage	Store at +4Λ C short term. Store at -20Λ C long term. Avoid freeze / thaw cycle.

## Application Details

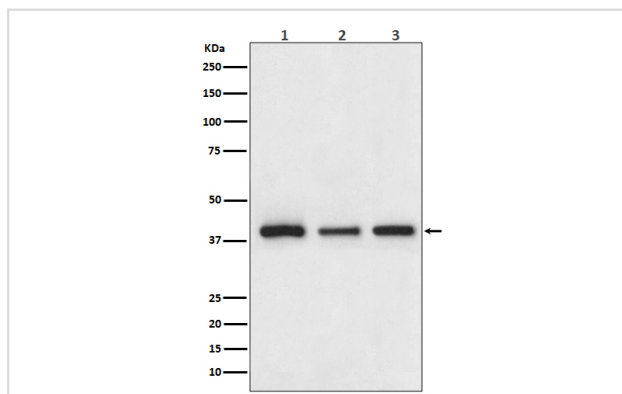
WB: 1:500~1:2000

IHC: 1:50~1:200

ICC/IF: 1:50~1:200

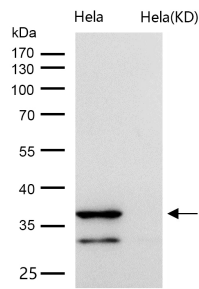
FC: 1:50

## Images



Western blot analysis of Cathepsin L/V/K/H expression in (1) HepG2 cell lysate; (2) NIH/3T3 cell lysate; (3) PC-12 cell lysate;

All lanes use the Antibody at 1:1K dilution for 1 hour at room temperature.



## Product Description

Closely involved in osteoclastic bone resorption and may participate partially in the disorder of bone remodeling. Displays potent endoprotease activity against fibrinogen at acid pH. May play an important role in extracellular matrix degradation.

Note: This product is for in vitro research use only