

Dopamine Transporter Rabbit mAb

Catalog No: #56148

Package Size: #56148-1 50ul #56148-2 100ul

Orders: order@signalwayantibody.com

Support: tech@signalwayantibody.com

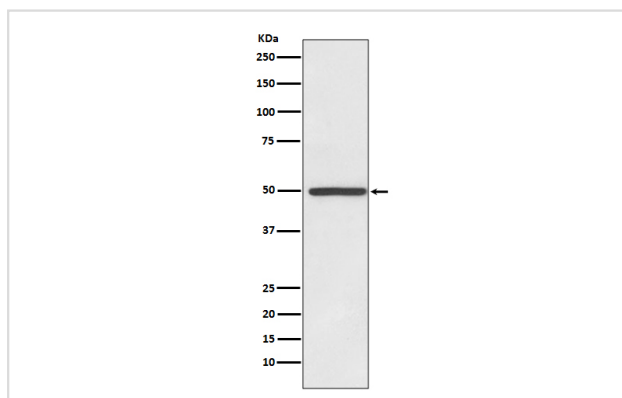
Description

Product Name	Dopamine Transporter Rabbit mAb
Host Species	Rabbit
Clonality	Monoclonal
Isotype	Rabbit IgG
Purification	Affinity-chromatography
Applications	WB IP FC
Species Reactivity	Human
Specificity	Dopamine Transporter Antibody detects endogenous levels of total Dopamine Transporter
Immunogen Description	A synthesized peptide derived from human Dopamine Transporter
Other Names	DA transporter; DAT1; Dopamine transporter 1; PKDYS; SLC6A3;
Accession No.	Uniprot:Q01959
Uniprot	Q01959
Calculated MW	50kDa
Formulation	Rabbit IgG in phosphate buffered saline , pH 7.4, 150mM NaCl, 0.02% sodium azide and 50% glycerol.
Storage	Store at +4Λ C short term. Store at -20Λ C long term. Avoid freeze / thaw cycle.

Application Details

WB:1:1000~1:5000IP:1:50FC:1:50

Images



Western blot analysis of Dopamine Transporter expression in HeLa cell lysate.

Product Description

Amine transporter. Terminates the action of dopamine by its high affinity sodium-dependent reuptake into presynaptic terminals.

Note: This product is for in vitro research use only