

HBG1/2 Rabbit mAb

Catalog No: #56150

Package Size: #56150-1 50ul #56150-2 100ul

Orders: order@signalwayantibody.com

Support: tech@signalwayantibody.com

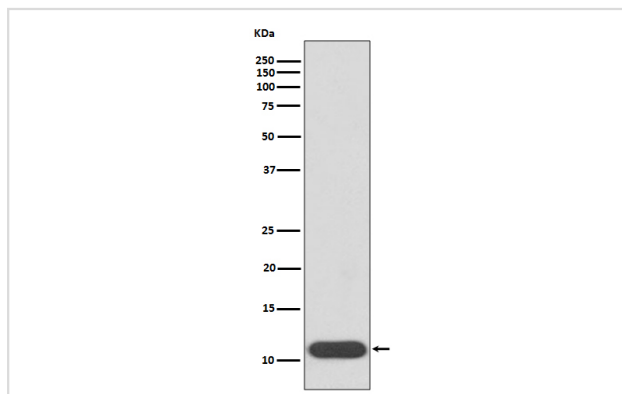
Description

Product Name	HBG1/2 Rabbit mAb
Host Species	Rabbit
Clonality	Monoclonal
Isotype	Rabbit IgG
Purification	Affinity-chromatography
Applications	WB
Species Reactivity	Human
Specificity	HBG1/2 Antibody detects endogenous levels of total HBG1/2
Immunogen Description	A synthesized peptide derived from human HBG1/2
Other Names	Gamma 1 globin; Gamma 2 globin; Gamma A hemoglobin; Gamma globin; Hb F Agamma; Hb F Ggamma; HBG1; HBG2; HBGA; HBGR;
Accession No.	Uniprot:P69891/P69892
Uniprot	P69891/P69892
Calculated MW	12kDa
Formulation	Rabbit IgG in phosphate buffered saline , pH 7.4, 150mM NaCl, 0.02% sodium azide and 50% glycerol.
Storage	Store at +4 Λ C short term. Store at -20 Λ C long term. Avoid freeze / thaw cycle.

Application Details

WB:1:500~1:2000

Images



Western blot analysis of HBG1/2 expression in K562 cell lysate.

Product Description

The two types of gamma chains differ at residue 136 where glycine is found in the G-gamma product (HBG2) and alanine is found in the A-gamma product (HBG1). The former is predominant at birth. The order of the genes in the beta-globin cluster is: 5'-epsilon -- gamma-G -- gamma-A -- delta -- beta--3'.

Note: This product is for in vitro research use only