

Granzyme B Rabbit mAb

Catalog No: #56152

Package Size: #56152-1 50ul #56152-2 100ul

Orders: order@signalwayantibody.com

Support: tech@signalwayantibody.com

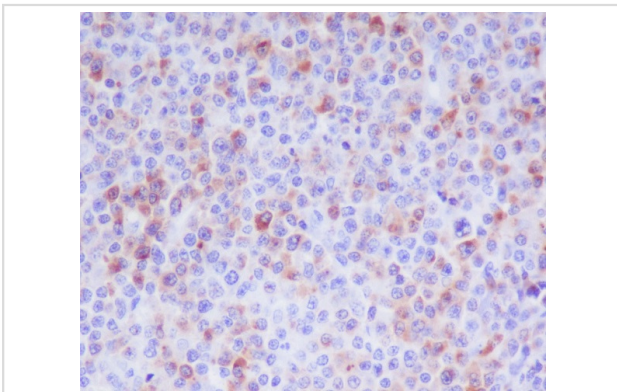
Description

| | |
|-----------------------|---|
| Product Name | Granzyme B Rabbit mAb |
| Host Species | Rabbit |
| Clonality | Monoclonal |
| Isotype | Rabbit IgG |
| Purification | Affinity-chromatography |
| Applications | IHC ICC/IF IP |
| Species Reactivity | Human |
| Specificity | Granzyme B Antibody detects endogenous levels of total Granzyme B |
| Immunogen Description | A synthesized peptide derived from human Granzyme B |
| Other Names | Granzyme B; Cathepsin G-like 1; CTSL1; Lymphocyte protease; Fragmentin-2; Granzyme-2; Human lymphocyte protein; SECT; GZMB; CGL1; CSPB; CTLA1, GRB; |
| Accession No. | Uniprot:P10144 |
| Uniprot | P10144 |
| Calculated MW | 38kDa |
| Storage | Rabbit IgG in phosphate buffered saline , pH 7.4, 150mM NaCl, 0.02% sodium azide and 50% glycerol. Store at +4°C short term. Store at -20°C long term. Avoid freeze / thaw cycle. |

Application Details

IHC:1:50~1:200 ICC/IF:1:50~1:200 IP:1:50

Images



Immunohistochemical analysis of paraffin-embedded human T cell lymphoma, using Granzyme B Antibody.

Product Description

This enzyme is necessary for target cell lysis in cell-mediated immune responses. It cleaves after Asp. Seems to be linked to an activation cascade of caspases (aspartate-specific cysteine proteases) responsible for apoptosis execution. Cleaves caspase-3, -7, -9 and 10 to give rise to active enzymes mediating apoptosis.

Note: This product is for in vitro research use only