

Rac1/2/3 Rabbit mAb

Catalog No: #56154

Package Size: #56154-1 50ul #56154-2 100ul

Orders: order@signalwayantibody.com

Support: tech@signalwayantibody.com

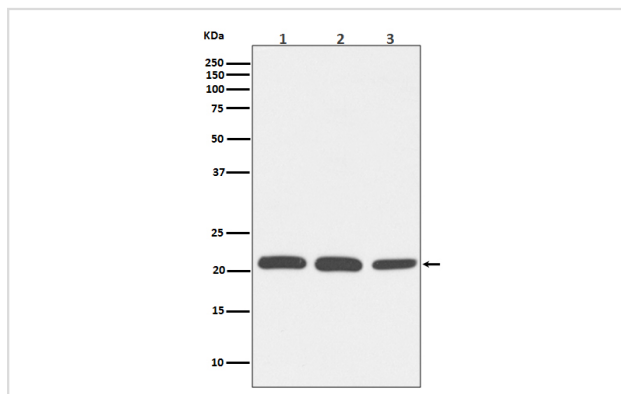
Description

Product Name	Rac1/2/3 Rabbit mAb
Host Species	Rabbit
Clonality	Monoclonal
Isotype	Rabbit IgG
Purification	Affinity-chromatography
Applications	WB
Species Reactivity	Human Mouse Rat
Specificity	Rac1/2/3 Antibody detects endogenous levels of total Rac1/2/3
Immunogen Description	A synthesized peptide derived from human Rac1/2/3
Other Names	Cell migration-inducing gene 5 protein; EN-7; GX; p21-Rac1; p21-Rac2; p21-Rac3; RAC1; RAC2; RAC3; TC25;
Accession No.	Uniprot:P63000/P15153/P60763
Uniprot	P63000/P15153/P60763
Calculated MW	21kDa
Formulation	Rabbit IgG in phosphate buffered saline , pH 7.4, 150mM NaCl, 0.02% sodium azide and 50% glycerol.
Storage	Store at +4 Λ C short term. Store at -20 Λ C long term. Avoid freeze / thaw cycle.

Application Details

WB:1:500~1:2000

Images



Western blot analysis of Rac1/2/3 expression in (1) HeLa cell lysate; (2) NIH/3T3 cell lysate; (3) PC-12 cell lysate.

Product Description

In mammals, Rac exists as three isoforms, Rac1, Rac2 and Rac3, which are highly similar in sequence. Rac and Cdc42 play key signaling roles in cytoskeletal reorganization, membrane trafficking, transcriptional regulation, cell growth and development. GTP binding stimulates the activity of Rac/Cdc42, and the hydrolysis of GTP to GDP through the protein's intrinsic GTPase activity, rendering it inactive.

Note: This product is for in vitro research use only