

## G-CSF Rabbit mAb

Catalog No: #56156

Package Size: #56156-1 50ul #56156-2 100ul

Orders: order@signalwayantibody.com

Support: tech@signalwayantibody.com

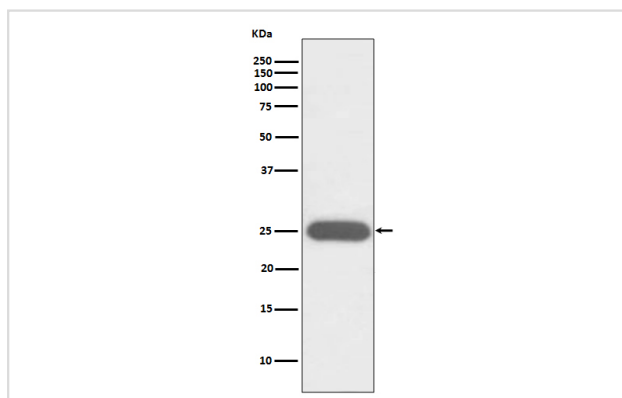
## Description

Product Name	G-CSF Rabbit mAb
Host Species	Rabbit
Clonality	Monoclonal
Isotype	Rabbit IgG
Purification	Affinity-chromatography
Applications	WB ICC/IF IP
Species Reactivity	Human Mouse Rat
Specificity	G-CSF Antibody detects endogenous levels of total G-CSF
Immunogen Description	A synthesized peptide derived from human G-CSF
Other Names	CSF beta; CSF3; CSF3OS; Csf; Filgrastim; G-CSF; GCSA; GCSF; MGI 2; Pluripoietin;
Accession No.	Uniprot:P09919
Uniprot	P09919
Calculated MW	25kDa
Formulation	Rabbit IgG in phosphate buffered saline , pH 7.4, 150mM NaCl, 0.02% sodium azide and 50% glycerol.
Storage	Store at +4Λ C short term. Store at -20Λ C long term. Avoid freeze / thaw cycle.

## Application Details

WB:1:500~1:2000ICC/IF:1:50~1:200IP:1:20

## Images



Western blot analysis of G-CSF expression in K562 cell lysate.

## Product Description

Granulocyte/macrophage colony-stimulating factors are cytokines that act in hematopoiesis by controlling the production, differentiation, and function of 2 related white cell populations of the blood, the granulocytes and the monocytes-macrophages. This CSF induces granulocytes.

---

Note: This product is for in vitro research use only