

## Serum Amyloid A Rabbit mAb

Catalog No: #56158

Package Size: #56158-1 50ul #56158-2 100ul

Orders: [order@signalwayantibody.com](mailto:order@signalwayantibody.com)Support: [tech@signalwayantibody.com](mailto:tech@signalwayantibody.com)

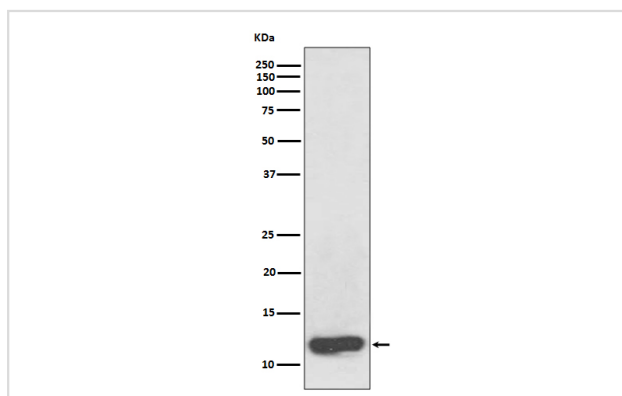
## Description

Product Name	Serum Amyloid A Rabbit mAb
Host Species	Rabbit
Clonality	Monoclonal
Isotype	Rabbit IgG
Purification	Affinity-chromatography
Applications	WB IHC
Species Reactivity	Human
Specificity	Serum Amyloid A Antibody detects endogenous levels of total Serum Amyloid A
Immunogen Description	A synthesized peptide derived from human Serum Amyloid A
Other Names	Amyloid fibril protein AA; Amyloid fibrils; Amyloid protein A; Fibrils; PIG4; SAA 1; SAA 2; Serum amyloid A protein precursor;
Accession No.	Uniprot:P0DJ18
Uniprot	P0DJ18
Calculated MW	12kDa
Formulation	Rabbit IgG in phosphate buffered saline , pH 7.4, 150mM NaCl, 0.02% sodium azide and 50% glycerol.
Storage	Store at +4 $\Lambda$ C short term. Store at -20 $\Lambda$ C long term. Avoid freeze / thaw cycle.

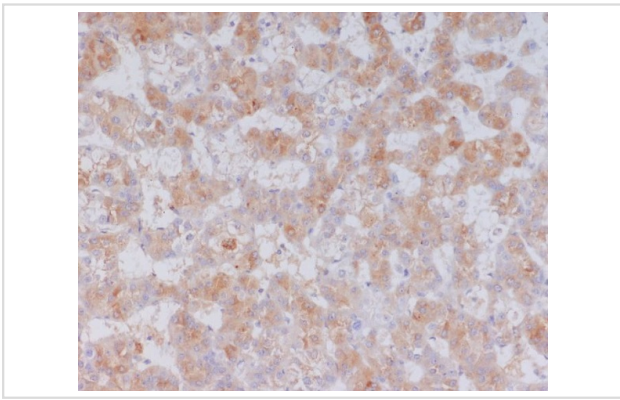
## Application Details

WB:1:500~1:2000IHC:1:50~1:200

## Images



Western blot analysis of Serum Amyloid A expression in human plasma lysate.



Immunohistochemical analysis of paraffin-embedded human liver cancer, using Serum Amyloid A Antibody.

## Product Description

---

Major acute phase reactant. Apolipoprotein of the HDL complex.

---

Note: This product is for in vitro research use only