

Apg3 (Atg3) Rabbit mAb

Catalog No: #56160

Package Size: #56160-1 50ul #56160-2 100ul

Orders: order@signalwayantibody.com

Support: tech@signalwayantibody.com

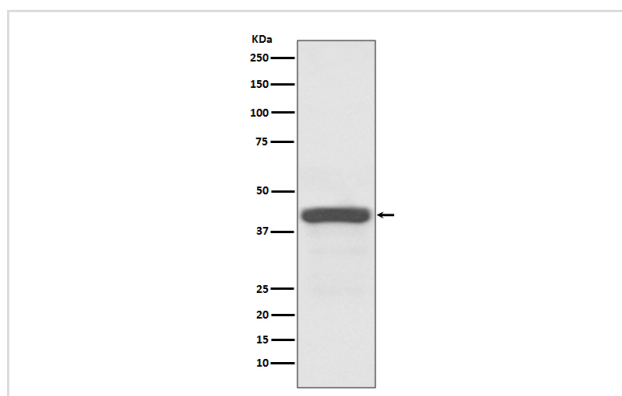
Description

Product Name	Apg3 (Atg3) Rabbit mAb
Host Species	Rabbit
Clonality	Monoclonal
Isotype	Rabbit IgG
Purification	Affinity-chromatography
Applications	WB IHC ICC/IF
Species Reactivity	Human Mouse Rat
Specificity	Apg3 (Atg3) Antibody detects endogenous levels of total Apg3 (Atg3)
Immunogen Description	A synthesized peptide derived from human Apg3 (Atg3)
Other Names	APG3 autophagy 3 like; APG3 like; APG3, <i>S. cerevisiae</i> , homolog of; APG3-like; APG3L; Apg3p; ATG3 autophagy related 3 homolog;
Accession No.	Uniprot:Q9NT62
Uniprot	Q9NT62
Calculated MW	40kDa
Formulation	Rabbit IgG in phosphate buffered saline , pH 7.4, 150mM NaCl, 0.02% sodium azide and 50% glycerol.
Storage	Store at +4 Λ C short term. Store at -20 Λ C long term. Avoid freeze / thaw cycle.

Application Details

WB:1:500~1:2000IHC:1:50~1:200ICC/IF:1:50~1:200

Images



Western blot analysis of Apg3 (Atg3) expression in Jurkat cell lysate.

Product Description

E2-like enzyme involved in autophagy and mitochondrial homeostasis. Catalyzes the conjugation of ATG8-like proteins (GABARAP, GABARAPL1, GABARAPL2 or MAP1LC3A) to phosphatidylethanolamine (PE). Catalyzing the conjugation of ATG12 to itself, ATG12 conjugation to ATG3 playing a role in mitochondrial homeostasis but not in autophagy. ATG7 (E1-like enzyme) facilitates this reaction by forming an E1-E2 complex with ATG3.

Note: This product is for in vitro research use only