

Apg10 (Atg10) Rabbit mAb

Catalog No: #56161

Package Size: #56161-1 50ul #56161-2 100ul

Orders: order@signalwayantibody.com

Support: tech@signalwayantibody.com

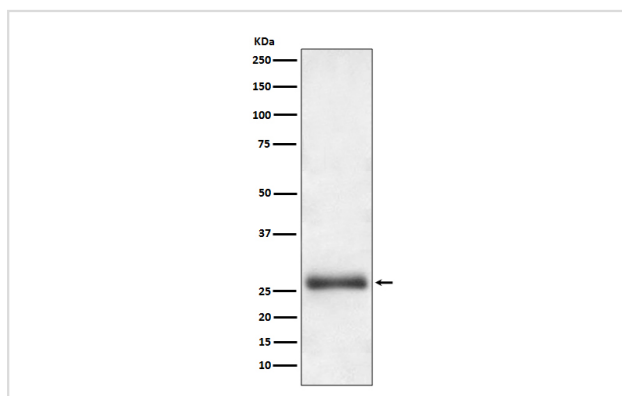
Description

Product Name	Apg10 (Atg10) Rabbit mAb
Host Species	Rabbit
Clonality	Monoclonal
Isotype	Rabbit IgG
Purification	Affinity-chromatography
Applications	WB IP
Species Reactivity	Human
Specificity	Apg10 (Atg10) Antibody detects endogenous levels of total Apg10 (Atg10)
Immunogen Description	A synthesized peptide derived from human Apg10 (Atg10)
Other Names	APG10L;ATG10 autophagy related 10 homolog (S. cerevisiae); ATG10 autophagy related 10 homolog; Autophagy related protein 10;
Accession No.	Uniprot:Q9H0Y0
Uniprot	Q9H0Y0
Calculated MW	25kDa
Formulation	Rabbit IgG in phosphate buffered saline , pH 7.4, 150mM NaCl, 0.02% sodium azide and 50% glycerol.
Storage	Store at +4Λ C short term. Store at -20Λ C long term. Avoid freeze / thaw cycle.

Application Details

WB:1:500~1:2000IP:1:50

Images



Western blot analysis of Apg10 (Atg10) expression in HeLa cell lysate.

Product Description

E2-like enzyme involved in autophagy. Acts as an E2-like enzyme that catalyzes the conjugation of ATG12 to ATG5. ATG12 conjugation to ATG5 is required for autophagy. Likely serves as an ATG5-recognition molecule. Not involved in ATG12 conjugation to ATG3 (By similarity). Plays a role in adenovirus-mediated cell lysis.

Note: This product is for in vitro research use only