

SOS1 Rabbit mAb

Catalog No: #56162

Package Size: #56162-1 50ul #56162-2 100ul

Orders: order@signalwayantibody.com

Support: tech@signalwayantibody.com

Description

Product Name	SOS1 Rabbit mAb
Host Species	Rabbit
Clonality	Monoclonal
Isotype	Rabbit IgG
Purification	Affinity-chromatography
Applications	WB IHC ICC/IF
Species Reactivity	Human Mouse Rat
Specificity	SOS1 Antibody detects endogenous levels of total SOS1
Immunogen Description	A synthesized peptide derived from human SOS1
Other Names	alternate SOS1; GF1; GGF1; GINGF; gingival fibromatosis; HGF; NS4; Sos1;
Accession No.	Uniprot:Q07889
Uniprot	Q07889
Calculated MW	152kDa
Formulation	Rabbit IgG in phosphate buffered saline , pH 7.4, 150mM NaCl, 0.02% sodium azide and 50% glycerol.
Storage	Store at +4°C short term. Store at -20°C long term. Avoid freeze / thaw cycle.

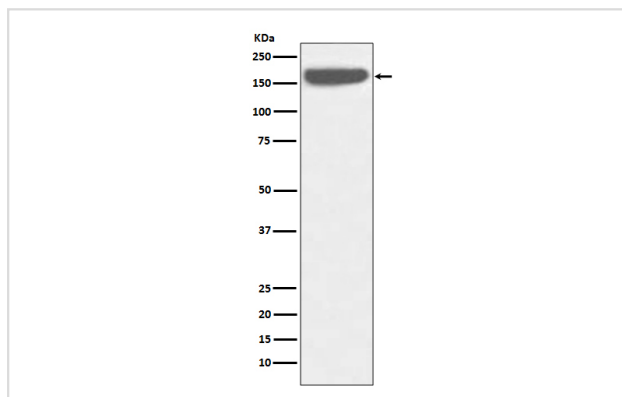
Application Details

WB: 1:500~1:2000

IHC: 1:50~1:200

ICC/IF: 1:50~1:200

Images



Western blot analysis of SOS1 expression in HeLa cell lysate.

Product Description

Promotes the exchange of Ras-bound GDP by GTP.

Note: This product is for in vitro research use only