

CRISPR-Cas9 SA Rabbit mAb

Catalog No: #56163

Package Size: #56163-1 50ul #56163-2 100ul

Orders: order@signalwayantibody.com

Support: tech@signalwayantibody.com

Description

Product Name	CRISPR-Cas9 SA Rabbit mAb
Host Species	Rabbit
Clonality	Monoclonal
Isotype	Rabbit IgG
Purification	Affinity-chromatography
Applications	WB IHC ICC/IF IP FC
Species Reactivity	Staphylococcus aureus
Specificity	CRISPR-Cas9 SA Antibody detects endogenous levels of total CRISPR-Cas9 SA
Immunogen Description	A synthesized peptide derived from CRISPR-Cas9 SA
Other Names	Cas9; CRISPR-associated endonuclease Cas9/Csn1; CRISPR-Cas9/Csn1; csn1; SpyCas9;
Accession No.	Uniprot:J7RUA5
Uniprot	J7RUA5
Calculated MW	124kDa
Formulation	Rabbit IgG in phosphate buffered saline , pH 7.4, 150mM NaCl, 0.02% sodium azide and 50% glycerol.
Storage	Store at +4°C short term. Store at -20°C long term. Avoid freeze / thaw cycle.

Application Details

WB:1:1000~1:5000

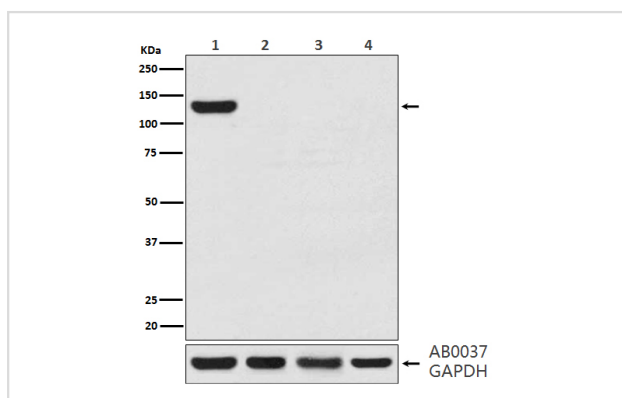
IHC:1:50~1:200

ICC/IF:1:50~1:200

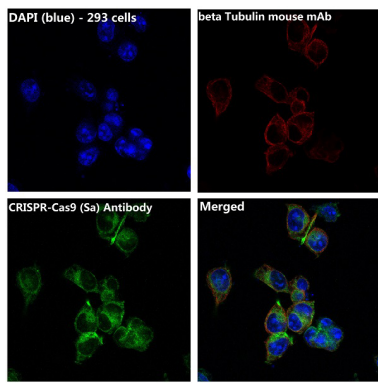
IP:1:30

FC:1:50

Images



Western blot analysis of CRISPR-Cas9 SA expression in (1) 293T cell lysate transfected with CRISPR-Cas9 SA; (2) 293T cell lysate; (3) 3T3 cell lysate; (4) PC12 cell lysate.



Immunofluorescent analysis of 293T cells transfected with CRISPR-Cas9 SA, using CRISPR-Cas9 SA Antibody .

Product Description

The CRISPR associated protein 9 (Cas9) is an RNA-guided DNA nuclease and part of the *Streptococcus pyogenes* CRISPR antiviral immunity system that provides adaptive immunity against extra chromosomal genetic material. CRISPR/Cas9 genome editing tools have been used in many organisms, including mouse and human cells.

Note: This product is for in vitro research use only