

EAAT2 Rabbit mAb

Catalog No: #56167

Package Size: #56167-1 50ul #56167-2 100ul

Orders: order@signalwayantibody.com

Support: tech@signalwayantibody.com

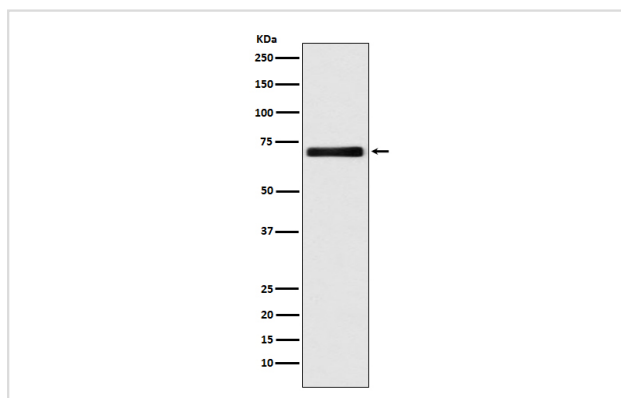
Description

Product Name	EAAT2 Rabbit mAb
Host Species	Rabbit
Clonality	Monoclonal
Isotype	Rabbit IgG
Purification	Affinity-chromatography
Applications	WB IP
Species Reactivity	Human Mouse Rat
Specificity	EAAT2 Antibody detects endogenous levels of total EAAT2
Immunogen Description	A synthesized peptide derived from human EAAT2
Other Names	EAAT2; Slc1a2;
Accession No.	Uniprot:P43004
Uniprot	P43004
Calculated MW	62kDa
Formulation	Rabbit IgG in phosphate buffered saline , pH 7.4, 150mM NaCl, 0.02% sodium azide and 50% glycerol.
Storage	Store at +4 Λ C short term. Store at -20 Λ C long term. Avoid freeze / thaw cycle.

Application Details

WB: 1:500~1:2000 IP: 1:50

Images



Western blot analysis of EAAT2 expression in HeLa cell lysate.

Product Description

Excitatory amino acid transporters (EAATs) regulate and maintain extracellular glutamate concentrations below excitotoxic levels. In addition, glutamate transporters may limit the duration of synaptic excitation by an electrogenic process in which the transmitter is cotransported with three sodium ions and one proton, followed by countertransport of a potassium ion.

Note: This product is for in vitro research use only