

## CHD4 Rabbit mAb

Catalog No: #56169

Package Size: #56169-1 50ul #56169-2 100ul

Orders: order@signalwayantibody.com

Support: tech@signalwayantibody.com

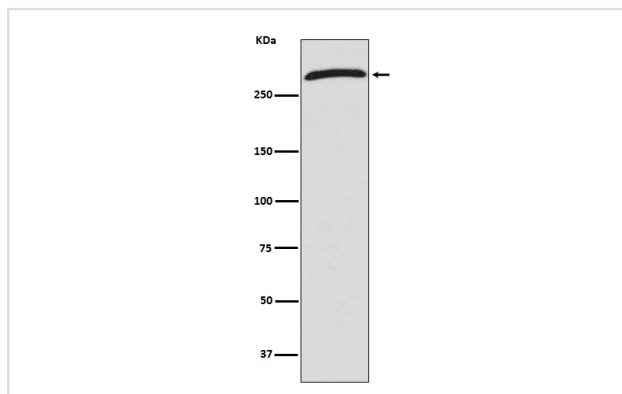
## Description

Product Name	CHD4 Rabbit mAb
Host Species	Rabbit
Clonality	Monoclonal
Isotype	Rabbit IgG
Purification	Affinity-chromatography
Applications	WB ICC/IF FC
Species Reactivity	Human
Specificity	CHD4 Antibody detects endogenous levels of total CHD4
Immunogen Description	A synthesized peptide derived from human CHD4
Other Names	ATP dependent helicase CHD4; CHD4; Chromodomain helicase DNA binding protein 4; Mi 2 autoantigen 218 kDa protein; Mi 2b; Mi2 beta;
Accession No.	Uniprot:Q14839
Uniprot	Q14839
Calculated MW	260kDa
Formulation	Rabbit IgG in phosphate buffered saline , pH 7.4, 150mM NaCl, 0.02% sodium azide and 50% glycerol.
Storage	Store at +4 $\Lambda$ C short term. Store at -20 $\Lambda$ C long term. Avoid freeze / thaw cycle.

## Application Details

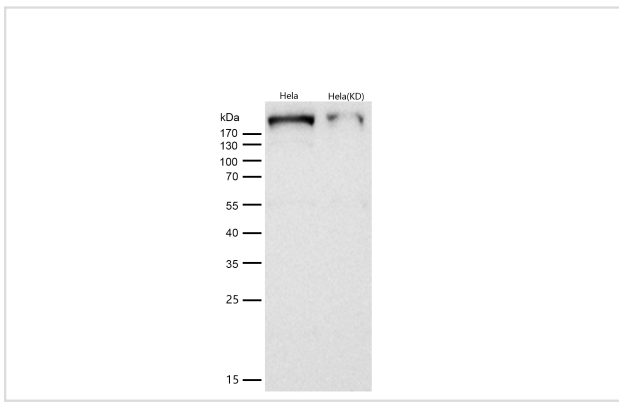
WB:1:1000~1:5000|ICC/IF:1:50~1:200|FC:1:50

## Images



Western blot analysis of CHD4 expression in 293T cell lysate.

All lanes use the Antibody at 1:2K dilution for 1 hour at room temperature.



## Product Description

Component of the histone deacetylase NuRD complex which participates in the remodeling of chromatin by deacetylating histones.

Note: This product is for in vitro research use only