

## EAAT1 Rabbit mAb

Catalog No: #56170

Package Size: #56170-1 50ul #56170-2 100ul

Orders: order@signalwayantibody.com

Support: tech@signalwayantibody.com

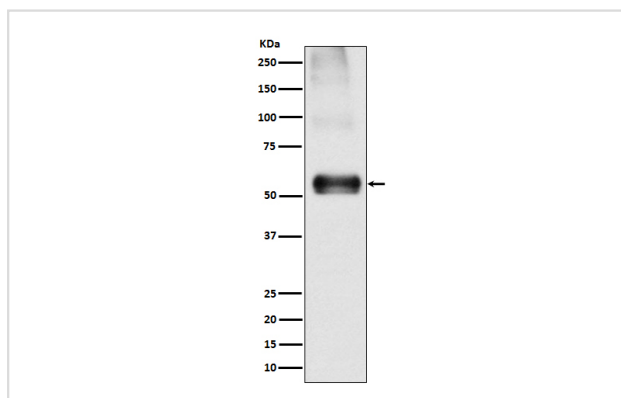
## Description

Product Name	EAAT1 Rabbit mAb
Host Species	Rabbit
Clonality	Monoclonal
Isotype	Rabbit IgG
Purification	Affinity-chromatography
Applications	WB IHC
Species Reactivity	Human Mouse Rat
Specificity	EAAT1 Antibody detects endogenous levels of total EAAT1
Immunogen Description	A synthesized peptide derived from human EAAT1
Other Names	EA6; EAAT1; GLAST1; Slc1a3;
Accession No.	Uniprot:P43003
Uniprot	P43003
Calculated MW	59kDa
Formulation	Rabbit IgG in phosphate buffered saline , pH 7.4, 150mM NaCl, 0.02% sodium azide and 50% glycerol.
Storage	Store at +4 $\Lambda$ C short term. Store at -20 $\Lambda$ C long term. Avoid freeze / thaw cycle.

## Application Details

WB: 1:500~1:2000 IHC: 1:50~1:200

## Images



Western blot analysis of EAAT1 expression in Mouse brain lysate.

## Product Description

EAAT1 has neuroprotective potential following ischemia since reactive astrocytes and activated microglia express EAAT1 but not EAAT2.

---

Note: This product is for in vitro research use only