

PIAS1 + PIAS2 Rabbit mAb

Catalog No: #56171

Package Size: #56171-1 50ul #56171-2 100ul

Orders: order@signalwayantibody.com

Support: tech@signalwayantibody.com

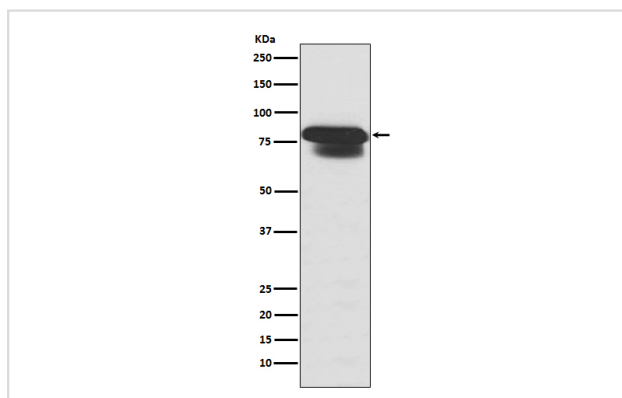
Description

Product Name	PIAS1 + PIAS2 Rabbit mAb
Host Species	Rabbit
Clonality	Monoclonal
Isotype	Rabbit IgG
Purification	Affinity-chromatography
Applications	WB IHC ICC/IF IP FC
Species Reactivity	Human Mouse Rat
Specificity	PIAS1 + PIAS2 Antibody detects endogenous levels of total PIAS1 + PIAS2
Immunogen Description	A synthesized peptide derived from human PIAS1
Other Names	PIAS1; PIAS2;
Accession No.	Uniprot:O75925/O75928
Uniprot	O75925/O75928
Calculated MW	76kDa
Formulation	Rabbit IgG in phosphate buffered saline , pH 7.4, 150mM NaCl, 0.02% sodium azide and 50% glycerol.
Storage	Store at +4 Λ C short term. Store at -20 Λ C long term. Avoid freeze / thaw cycle.

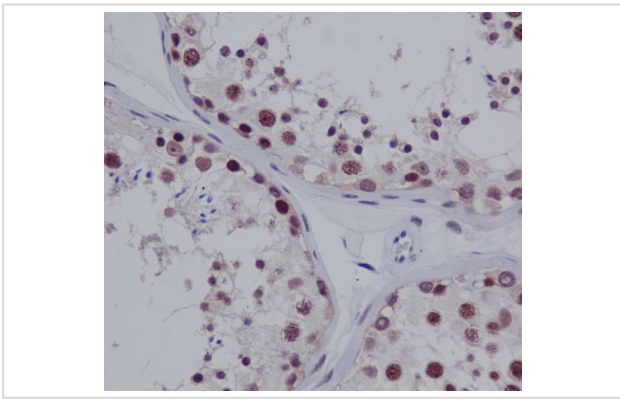
Application Details

WB:1:500~1:2000IHC:1:50~1:200ICC/IF:1:50~1:200IP:1:50FC:1:50

Images



Western blot analysis of PIAS1+PIAS2+PIAS3 expression in HepG2 cell lysate.



Immunohistochemical analysis of paraffin-embedded human colon, using PIAS1+PIAS2+PIAS3 Antibody.

Product Description

This proteins are involved in the pathway protein sumoylation, which is part of Protein modification.

Note: This product is for in vitro research use only