

MEF2A+MEF2C Rabbit mAb

Catalog No: #56176

Package Size: #56176-1 50ul #56176-2 100ul

Orders: order@signalwayantibody.comSupport: tech@signalwayantibody.com

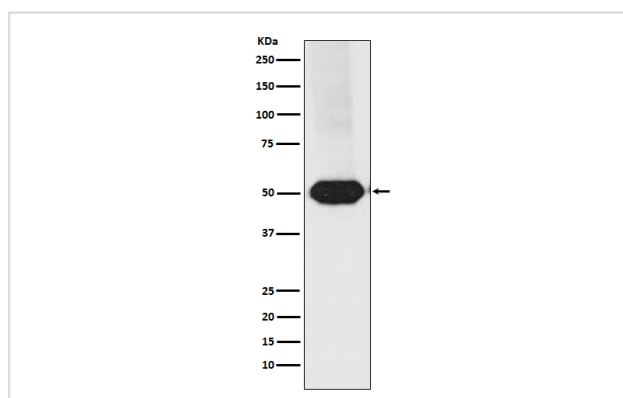
Description

Product Name	MEF2A+MEF2C Rabbit mAb
Host Species	Rabbit
Clonality	Monoclonal
Isotype	Rabbit IgG
Purification	Affinity-chromatography
Applications	WB IHC ICC/IF FC
Species Reactivity	Human Mouse Rat
Specificity	MEF2A+MEF2C Antibody detects endogenous levels of total MEF2A+MEF2C
Immunogen Description	A synthesized peptide derived from human MEF2A+MEF2C
Other Names	ADCAD1; MEF2; MEF2A; Myocyte enhancer factor 2A; RSRFC4; RSRFC9;
Accession No.	Uniprot:Q06413/Q02078
Uniprot	Q06413/Q02078
Calculated MW	51kDa
Formulation	Rabbit IgG in phosphate buffered saline , pH 7.4, 150mM NaCl, 0.02% sodium azide and 50% glycerol.
Storage	Store at +4ℳ C short term. Store at -20ℳ C long term. Avoid freeze / thaw cycle.

Application Details

WB:1:500~1:2000IHC:1:50~1:200ICC/IF:1:50~1:200FC:1:30

Images



Western blot analysis of MEF2A+MEF2C expression in Raji cell lysate.

Product Description

Transcription activator which binds specifically to the MEF2 element present in the regulatory regions of many muscle-specific genes. Controls cardiac morphogenesis and myogenesis, and is also involved in vascular development. Plays an essential role in hippocampal-dependent learning and memory by suppressing the number of excitatory synapses and thus regulating basal and evoked synaptic transmission. Crucial for normal neuronal development, distribution, and electrical activity in the neocortex.

Note: This product is for in vitro research use only