

## CD276 Rabbit mAb

Catalog No: #56177

Package Size: #56177-1 50ul #56177-2 100ul

Orders: order@signalwayantibody.com

Support: tech@signalwayantibody.com

## Description

Product Name	CD276 Rabbit mAb
Host Species	Rabbit
Clonality	Monoclonal
Isotype	Rabbit IgG
Purification	Affinity-chromatography
Applications	WB IP FC
Species Reactivity	Human Mouse
Specificity	CD276 Antibody detects endogenous levels of total CD276
Immunogen Description	A synthesized peptide derived from human CD276
Other Names	4lg B7 H3; B7 homolog 3; B7H3; B7RP-2; CD276 antigen; CD276 molecule;
Accession No.	Uniprot:Q5ZPR3
Uniprot	Q5ZPR3
Calculated MW	100kDa
Formulation	Rabbit IgG in phosphate buffered saline , pH 7.4, 150mM NaCl, 0.02% sodium azide and 50% glycerol.
Storage	Store at +4Λ C short term. Store at -20Λ C long term. Avoid freeze / thaw cycle.

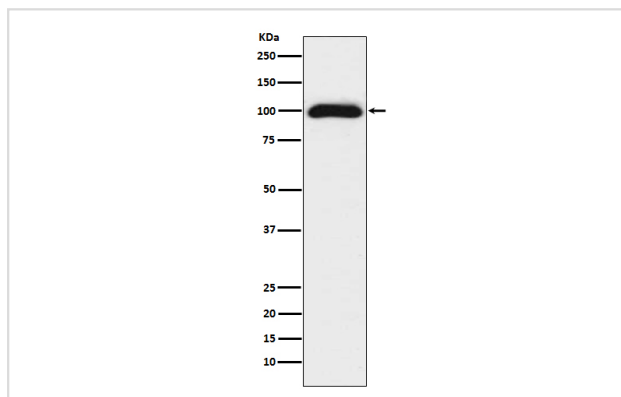
## Application Details

WB: 1:500~1:2000

IP: 1:50

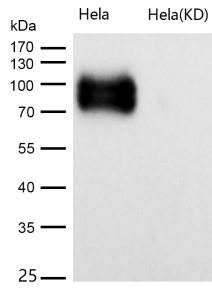
FC: 1:200

## Images



Western blot analysis of CD276 expression in 293T cell lysate.

All lanes use the Antibody at 1:1K dilution for 1 hour at room temperature.



## Product Description

May participate in the regulation of T-cell-mediated immune response. May play a protective role in tumor cells by inhibiting natural-killer mediated cell lysis as well as a role of marker for detection of neuroblastoma cells. May be involved in the development of acute and chronic transplant rejection and in the regulation of lymphocytic activity at mucosal surfaces.

Note: This product is for in vitro research use only