

Human IgG Rabbit mAb

Catalog No: #56180

Package Size: #56180-1 50ul #56180-2 100ul

Orders: order@signalwayantibody.com

Support: tech@signalwayantibody.com

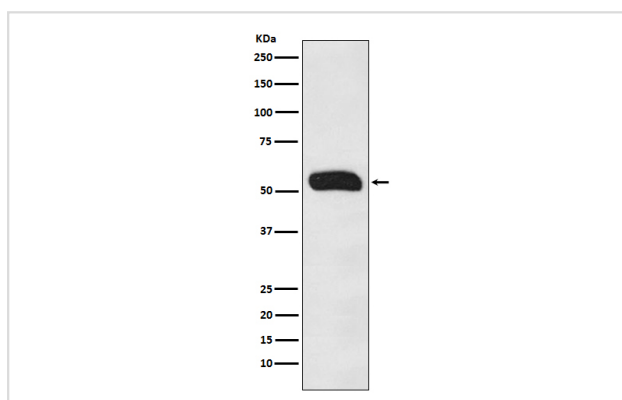
Description

Product Name	Human IgG Rabbit mAb
Host Species	Rabbit
Clonality	Monoclonal
Isotype	Rabbit IgG
Purification	Affinity-chromatography
Applications	WB IHC
Species Reactivity	Human
Specificity	Human IgG Antibody detects endogenous levels of total Human IgG
Immunogen Description	A synthesized peptide derived from human Human IgG
Other Names	G1m marker; G2m marker; G3m marker; G4m marker; HDC; Heavy chain disease protein; Human immunoglobulin G; Ig gamma 1 chain C region; Ig gamma 2 chain C region; Ig gamma 3 chain C region; Ig gamma 4 chain C region; IgG heavy chain locus; IGHG1; IGHG2; IGHG3; IGHG4;
Accession No.	Uniprot:P01857/P01859/P01860/P01861
Uniprot	P01857/P01859/P01860/P01861
Calculated MW	52kDa
Formulation	Rabbit IgG in phosphate buffered saline , pH 7.4, 150mM NaCl, 0.02% sodium azide and 50% glycerol.
Storage	Store at +4Λ C short term. Store at -20Λ C long term. Avoid freeze / thaw cycle.

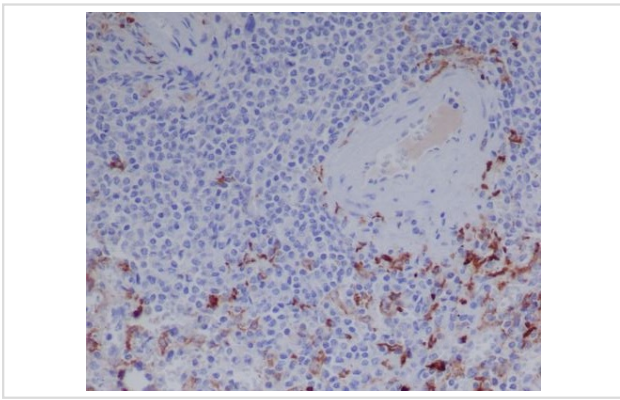
Application Details

WB:1:500~1:2000IHC:1:50~1:200

Images



Western blot analysis of Human IgG expression in Human plasma lysate.



Immunohistochemical analysis of paraffin-embedded human spleen, using Human IgG Antibody.

Product Description

IgG is a monomeric immunoglobulin, built of two heavy chains gamma and two light chains. Each molecule has two antigen binding sites. This is the most abundant immunoglobulin and is approximately equally distributed in blood and in tissue liquids, constituting 75% of serum immunoglobulins in humans.

Note: This product is for in vitro research use only