

## PAI1 Rabbit mAb

Catalog No: #56181

Package Size: #56181-1 50ul #56181-2 100ul

Orders: order@signalwayantibody.com

Support: tech@signalwayantibody.com

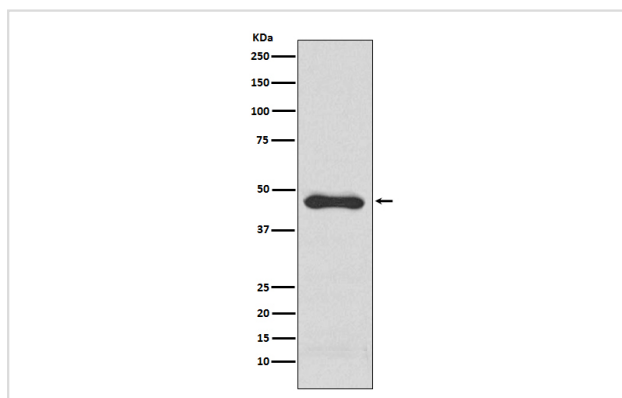
## Description

Product Name	PAI1 Rabbit mAb
Host Species	Rabbit
Clonality	Monoclonal
Isotype	Rabbit IgG
Purification	Affinity-chromatography
Applications	WB ICC/IF IP FC
Species Reactivity	Human
Specificity	PAI1 Antibody detects endogenous levels of total PAI1
Immunogen Description	A synthesized peptide derived from human PAI1
Other Names	PAI-1; PAI-1; PAI; Endothelial plasminogen activator inhibitor; SERPINE1; PAI1; PLANH1; Serpine 1;
Accession No.	Uniprot:P05121
Uniprot	P05121
Calculated MW	45kDa
Formulation	Rabbit IgG in phosphate buffered saline , pH 7.4, 150mM NaCl, 0.02% sodium azide and 50% glycerol.
Storage	Store at +4Λ C short term. Store at -20Λ C long term. Avoid freeze / thaw cycle.

## Application Details

WB:1:500~1:1000ICC/IF:1:50~1:200IP:1:30FC:1:50

## Images



Western blot analysis of PAI1 expression in HepG2 cell lysate.

## Product Description

This inhibitor acts as 'bait' for tissue plasminogen activator, urokinase, and protein C. Its rapid interaction with TPA may function as a major control point in the regulation of fibrinolysis.

---

Note: This product is for in vitro research use only