

## PRAS40 Rabbit mAb

Catalog No: #56183

Package Size: #56183-1 50ul #56183-2 100ul

Orders: order@signalwayantibody.com

Support: tech@signalwayantibody.com

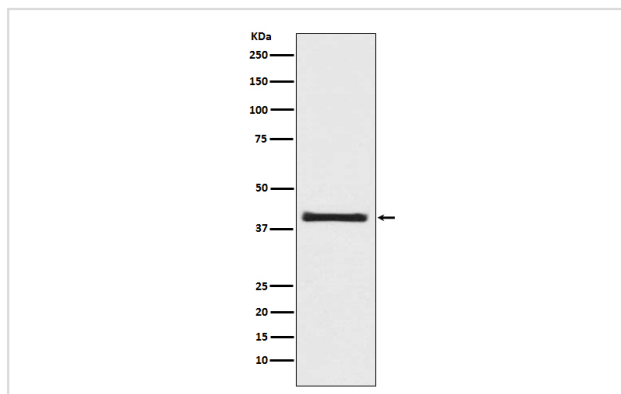
## Description

Product Name	PRAS40 Rabbit mAb
Host Species	Rabbit
Clonality	Monoclonal
Isotype	Rabbit IgG
Purification	Affinity-chromatography
Applications	WB IHC IP FC
Species Reactivity	Human Mouse
Specificity	PRAS40 Antibody detects endogenous levels of total PRAS40
Immunogen Description	A synthesized peptide derived from human PRAS40
Other Names	40 kDa proline rich AKT substrate; AKT1 S1; AKT1 substrate 1 (proline rich); AKT1S1; Lobe; PRAS40; Proline rich akt substrate;
Accession No.	Uniprot:Q96B36
Uniprot	Q96B36
Calculated MW	40kDa
Formulation	Rabbit IgG in phosphate buffered saline , pH 7.4, 150mM NaCl, 0.02% sodium azide and 50% glycerol.
Storage	Store at +4 $\Lambda$ C short term. Store at -20 $\Lambda$ C long term. Avoid freeze / thaw cycle.

## Application Details

WB:1:500~1:2000IHC:1:50~1:200IP:1:50FC:1:50

## Images



Western blot analysis of PRAS40 expression in 293T cell lysate.

## Product Description

PRAS40 interacts with Raptor in mTOR complex 1 (mTORC1) in insulin-deprived cells and inhibits the activation of the mTORC1 pathway mediated by the cell cycle protein Rheb. Phosphorylation of PRAS40 by Akt at Thr246 relieves PRAS40 inhibition of mTORC1. mTORC1 in turn phosphorylates PRAS40 at Ser183.

---

Note: This product is for in vitro research use only