

## Atg4B Rabbit mAb

Catalog No: #56184

Package Size: #56184-1 50ul #56184-2 100ul

Orders: order@signalwayantibody.com

Support: tech@signalwayantibody.com

## Description

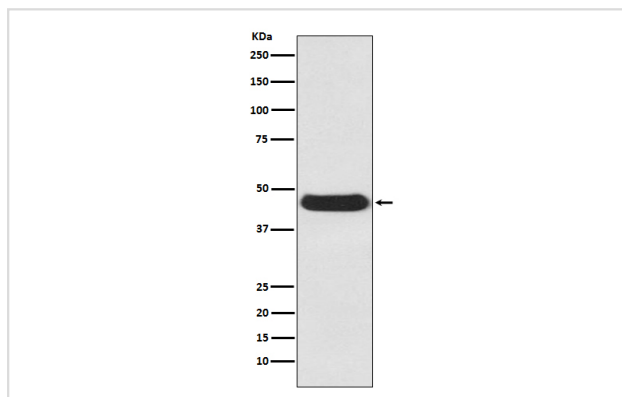
Product Name	Atg4B Rabbit mAb
Host Species	Rabbit
Clonality	Monoclonal
Isotype	Rabbit IgG
Purification	Affinity-chromatography
Applications	WB FC
Species Reactivity	Human Mouse Rat
Specificity	Atg4B Antibody detects endogenous levels of total Atg4B
Immunogen Description	A synthesized peptide derived from human Atg4B
Other Names	Cysteine protease ATG4B; Autophagin-1; Autophagy-related cysteine endopeptidase 1; Autophagy-related protein 4 homolog B; hAPG4B;
Accession No.	Uniprot:Q9Y4P1
Uniprot	Q9Y4P1
Calculated MW	44kDa
Formulation	Rabbit IgG in phosphate buffered saline , pH 7.4, 150mM NaCl, 0.02% sodium azide and 50% glycerol.
Storage	Store at +4Λ C short term. Store at -20Λ C long term. Avoid freeze / thaw cycle.

## Application Details

WB:1:500~1:2000

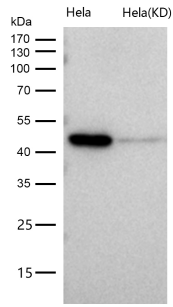
FC:1:100

## Images



Western blot analysis of Atg4B expression in Ramos cell lysate.

All lanes use the Antibody at 1:1K dilution for 1 hour at room temperature.



## Product Description

Cysteine protease required for autophagy, which cleaves the C-terminal part of either MAP1LC3, GABARAPL2 or GABARAP, allowing the liberation of form I. A subpopulation of form I is subsequently converted to a smaller form (form II).

Note: This product is for in vitro research use only