

## ACVRL1 Rabbit mAb

Catalog No: #56186

Package Size: #56186-1 50ul #56186-2 100ul

Orders: order@signalwayantibody.com

Support: tech@signalwayantibody.com

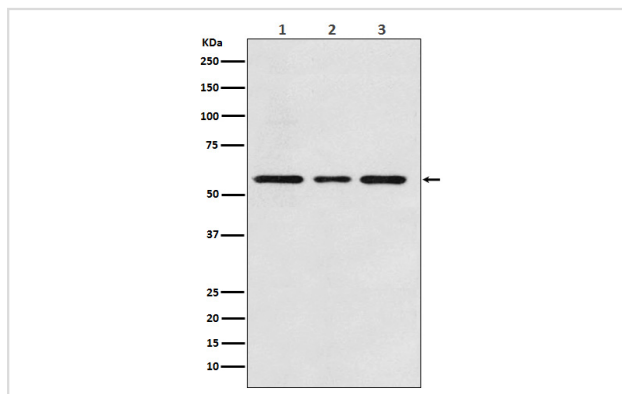
## Description

Product Name	ACVRL1 Rabbit mAb
Host Species	Rabbit
Clonality	Monoclonal
Isotype	Rabbit IgG
Purification	Affinity-chromatography
Applications	WB
Species Reactivity	Human Mouse Rat
Specificity	ACVRL1 Antibody detects endogenous levels of total ACVRL1
Immunogen Description	A synthesized peptide derived from human ACVRL1
Other Names	SKR3; Activin receptor-like kinase 1; ALK-1; TGF-B superfamily receptor type I; TSR-I; ACVRL1; ACVRLK1; ALK1;
Accession No.	Uniprot:P37023
Uniprot	P37023
Calculated MW	56kDa
Formulation	Rabbit IgG in phosphate buffered saline , pH 7.4, 150mM NaCl, 0.02% sodium azide and 50% glycerol.
Storage	Store at +4Λ C short term. Store at -20Λ C long term. Avoid freeze / thaw cycle.

## Application Details

WB:1:500~1:2000

## Images



Western blot analysis of ACVRL1 expression in (1) Jurkat cell lysate; (2) Mouse kidney lysate; (3) Rat kidney lysate.

## Product Description

On ligand binding, forms a receptor complex consisting of two type II and two type I transmembrane serine/threonine kinases. Type II receptors phosphorylate and activate type I receptors which autophosphorylate, then bind and activate SMAD transcriptional regulators. Receptor for TGF-beta. May bind activin as well.

---

Note: This product is for in vitro research use only