

LMO2 Rabbit mAb

Catalog No: #56190

Package Size: #56190-1 50ul #56190-2 100ul

Orders: order@signalwayantibody.com

Support: tech@signalwayantibody.com

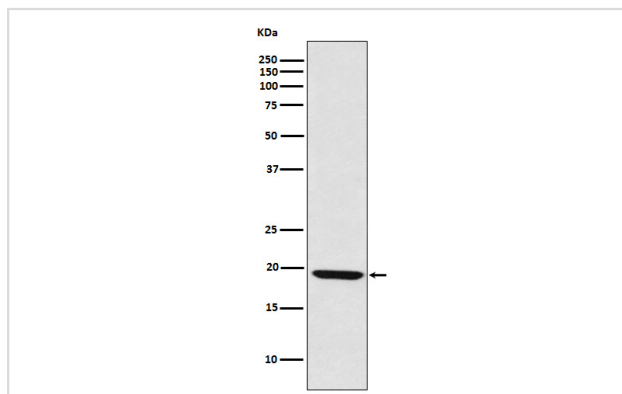
Description

Product Name	LMO2 Rabbit mAb
Host Species	Rabbit
Clonality	Monoclonal
Isotype	Rabbit IgG
Purification	Affinity-chromatography
Applications	WB IP FC
Species Reactivity	Human Mouse Rat
Specificity	LMO2 Antibody detects endogenous levels of total LMO2
Immunogen Description	A synthesized peptide derived from human LMO2
Other Names	Cysteine rich protein TTG 2; LIM domain only 2 (rhombotin like 1); lmo2; RBTN 2; RBTN1; RHOM 2; Rhombotin 2; TTG 2;
Accession No.	Uniprot:P25791
Uniprot	P25791
Calculated MW	18kDa
Formulation	Rabbit IgG in phosphate buffered saline , pH 7.4, 150mM NaCl, 0.02% sodium azide and 50% glycerol.
Storage	Store at +4 Λ C short term. Store at -20 Λ C long term. Avoid freeze / thaw cycle.

Application Details

WB:1:500~1:2000IP:1:100FC:1:100

Images



Western blot analysis of LMO2 expression in Raji cell lysate.

Product Description

Acts with TAL1/SCL to regulate red blood cell development. Also acts with LDB1 to maintain erythroid precursors in an immature state.

Note: This product is for in vitro research use only