

## PTGER2 Rabbit mAb

Catalog No: #56192

Package Size: #56192-1 50ul #56192-2 100ul

Orders: order@signalwayantibody.com

Support: tech@signalwayantibody.com

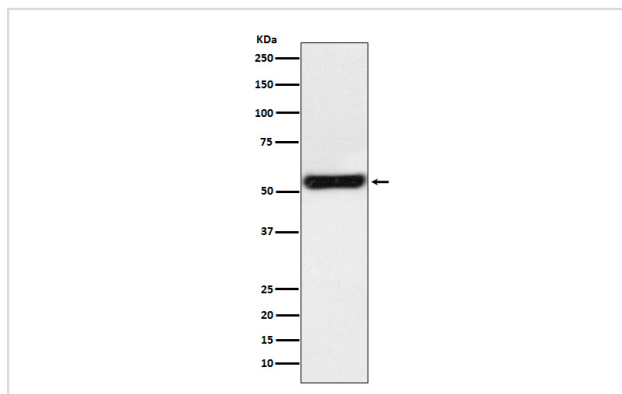
## Description

Product Name	PTGER2 Rabbit mAb
Host Species	Rabbit
Clonality	Monoclonal
Isotype	Rabbit IgG
Purification	Affinity-chromatography
Applications	WB IHC ICC/IF FC
Species Reactivity	Human Mouse Rat Cow
Specificity	PTGER2 Antibody detects endogenous levels of total PTGER2
Immunogen Description	A synthesized peptide derived from human PTGER2
Other Names	EP2; PGE2 receptor EP2 subtype; Prostaglandin E receptor 2 subtype EP2 53kDa; Prostaglandin E2 receptor EP2 subtype; Prostanoid EP2 receptor; Ptger2;
Accession No.	Uniprot:P43116
Uniprot	P43116
Calculated MW	52kDa
Formulation	Rabbit IgG in phosphate buffered saline , pH 7.4, 150mM NaCl, 0.02% sodium azide and 50% glycerol.
Storage	Store at +4Λ C short term. Store at -20Λ C long term. Avoid freeze / thaw cycle.

## Application Details

WB:1:500~1:2000IHC:1:100~1:500ICC/IF:1:50~1:200FC:1:50

## Images



Western blot analysis of PTGER2 expression in JAR cell lysate.

## Product Description

Receptor for prostaglandin E2 (PGE2). The activity of this receptor is mediated by G(s) proteins that stimulate adenylate cyclase. The subsequent raise in intracellular cAMP is responsible for the relaxing effect of this receptor on smooth muscle.

---

Note: This product is for in vitro research use only