

FRS2 Rabbit mAb

Catalog No: #56195

Package Size: #56195-1 50ul #56195-2 100ul

Orders: order@signalwayantibody.com

Support: tech@signalwayantibody.com

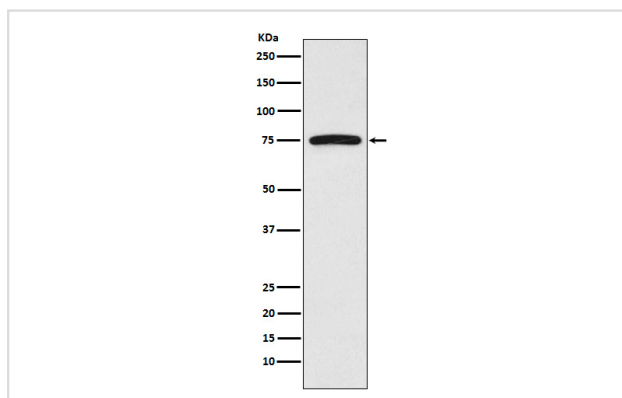
Description

Product Name	FRS2 Rabbit mAb
Host Species	Rabbit
Clonality	Monoclonal
Isotype	Rabbit IgG
Purification	Affinity-chromatography
Applications	WB IP FC
Species Reactivity	Human
Specificity	FRS2 Antibody detects endogenous levels of total FRS2
Immunogen Description	A synthesized peptide derived from human FRS2
Other Names	FGFR signaling adaptor SNT; FGFR substrate 2; FRS2; FRS2A; FRS2 alpha; SNT; SNT1; Suc 1;
Accession No.	Uniprot:Q8WU20
Uniprot	Q8WU20
Calculated MW	57kDa
Formulation	Rabbit IgG in phosphate buffered saline , pH 7.4, 150mM NaCl, 0.02% sodium azide and 50% glycerol.
Storage	Store at +4Λ C short term. Store at -20Λ C long term. Avoid freeze / thaw cycle.

Application Details

WB:1:500~1:2000IP:1:50FC:1:20

Images



Western blot analysis of FRS2 expression in HeLa cell lysate.

Product Description

Adapter protein that links FGR and NGF receptors to downstream signaling pathways. Involved in the activation of MAP kinases. Modulates signaling via SHC1 by competing for a common binding site on NTRK1.

Note: This product is for in vitro research use only