

## ITK Rabbit mAb

Catalog No: #56198

Package Size: #56198-1 50ul #56198-2 100ul

Orders: order@signalwayantibody.com

Support: tech@signalwayantibody.com

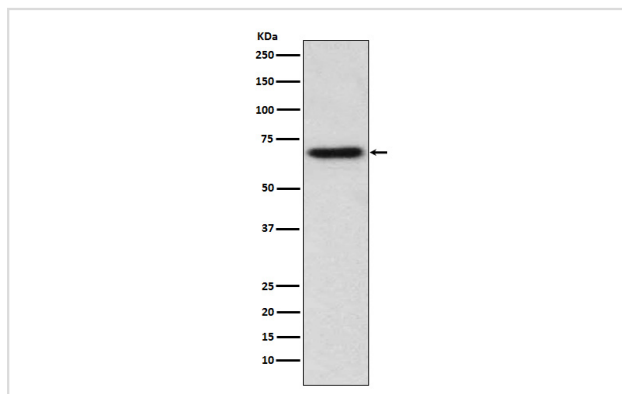
## Description

Product Name	ITK Rabbit mAb
Host Species	Rabbit
Clonality	Monoclonal
Isotype	Rabbit IgG
Purification	Affinity-chromatography
Applications	WB IHC FC
Species Reactivity	Human
Specificity	ITK Antibody detects endogenous levels of total ITK
Immunogen Description	A synthesized peptide derived from human ITK
Other Names	EMT; Homolog of mouse T cell itk/tsk; IL 2 inducible T cell kinase; Itk; Kinase EMT; LPFS1; LYK; PSCTK2; T cell specific kinase; TSK; Tyrosine protein kinase ITK/TSK;
Accession No.	Uniprot:Q08881
Uniprot	Q08881
Calculated MW	72kDa
Formulation	Rabbit IgG in phosphate buffered saline , pH 7.4, 150mM NaCl, 0.02% sodium azide and 50% glycerol.
Storage	Store at +4 $\Lambda$ C short term. Store at -20 $\Lambda$ C long term. Avoid freeze / thaw cycle.

## Application Details

WB:1:500~1:2000IHC:1:50~1:200FC:1:60

## Images



Western blot analysis of ITK expression in Jurkat cell lysate.

## Product Description

Interleukin-2 inducible T-cell kinase (Itk, Emt or Tsk) is a member of the non-receptor protein tyrosine kinases. Family members of Itk include Tec, Btk, Rlk and Bmx and are all defined by a common structure: an amino-terminal PH domain, a Tec-homology domain and a SH3 and SH2 domain followed by a carboxy-terminal kinase domain. Tec, Rlk and Itk are expressed in T cells and activated in response to T cell receptor (TCR) engagement.

---

Note: This product is for in vitro research use only