

MBD1 Rabbit mAb

Catalog No: #56200

Package Size: #56200-1 50ul #56200-2 100ul

Orders: order@signalwayantibody.com

Support: tech@signalwayantibody.com

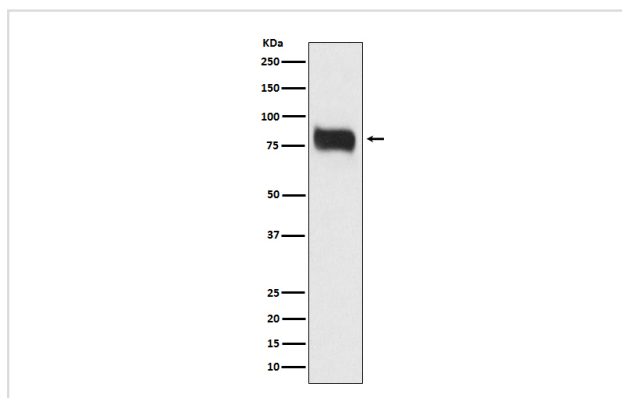
Description

Product Name	MBD1 Rabbit mAb
Host Species	Rabbit
Clonality	Monoclonal
Isotype	Rabbit IgG
Purification	Affinity-chromatography
Applications	WB IHC ICC/IF IP
Species Reactivity	Human
Specificity	MBD1 Antibody detects endogenous levels of total MBD1
Immunogen Description	A synthesized peptide derived from human MBD1
Other Names	CXXC 3; Mbd1; MECP1 COMPLEX; PCM1; RFT;
Accession No.	Uniprot:Q9UIS9
Uniprot	Q9UIS9
Calculated MW	67kDa
Formulation	Rabbit IgG in phosphate buffered saline , pH 7.4, 150mM NaCl, 0.02% sodium azide and 50% glycerol.
Storage	Store at +4Λ C short term. Store at -20Λ C long term. Avoid freeze / thaw cycle.

Application Details

WB:1:500~1:1000IHC:1:50~1:200ICC/IF:1:50~1:200IP:1:20

Images



Western blot analysis of MBD1 expression in HeLa cell lysate.

Product Description

Transcriptional repressor that binds CpG islands in promoters where the DNA is methylated at position 5 of cytosine within CpG dinucleotides. Binding is abolished by the presence of 7-mG that is produced by DNA damage by methylmethanesulfonate (MMS).

Note: This product is for in vitro research use only