

## Menin Rabbit mAb

Catalog No: #56202

Package Size: #56202-1 50ul #56202-2 100ul

Orders: order@signalwayantibody.com

Support: tech@signalwayantibody.com

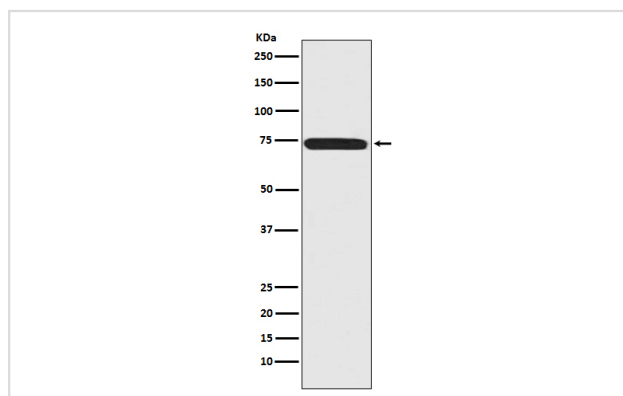
## Description

Product Name	Menin Rabbit mAb
Host Species	Rabbit
Clonality	Monoclonal
Isotype	Rabbit IgG
Purification	Affinity-chromatography
Applications	WB IHC ICC/IF IP
Species Reactivity	Human
Specificity	Menin Antibody detects endogenous levels of total Menin
Immunogen Description	A synthesized peptide derived from human Menin
Other Names	MEA1; Men1; Menin; Multiple Endocrine Adenomatosis 1; Multiple Endocrine Neoplasia 1; SCG2; Suppressor Candidate Gene 2; Wermer syndrome; ZES;
Accession No.	Uniprot:O00255
Uniprot	O00255
Calculated MW	68kDa
Formulation	Rabbit IgG in phosphate buffered saline , pH 7.4, 150mM NaCl, 0.02% sodium azide and 50% glycerol.
Storage	Store at +4ℳ C short term. Store at -20ℳ C long term. Avoid freeze / thaw cycle.

## Application Details

WB:1:1000~1:5000IHC:1:50~1:200ICC/IF:1:50~1:200IP:1:50

## Images



Western blot analysis of Menin expression in 293T cell lysate.

## Product Description

Menin, the protein product of the MEN1 gene, is a component of the mixed-lineage leukemia protein (MLL)-containing histone methyltransferase complex that facilitates methylation of histone H3 Lys4 to promote transcriptional activation. Menin functions to suppress proliferation of pancreatic islet cells, at least in part through MLL-mediated activation of the p18INK4c (p18) and p27CIP/KIP (p27) cyclin-dependent kinase inhibitor genes.

---

Note: This product is for in vitro research use only