

## HEC1 Rabbit mAb

Catalog No: #56209

Package Size: #56209-1 50ul #56209-2 100ul

Orders: order@signalwayantibody.com

Support: tech@signalwayantibody.com

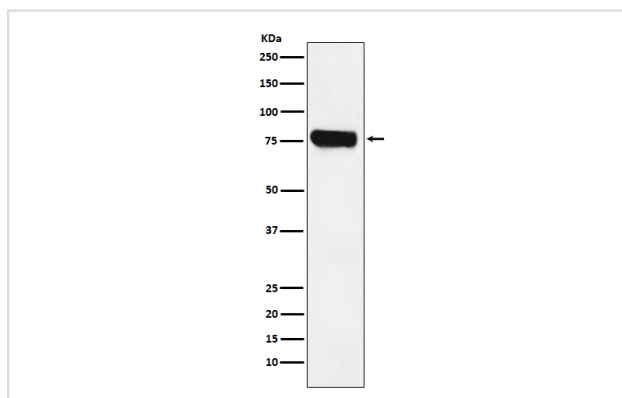
## Description

Product Name	HEC1 Rabbit mAb
Host Species	Rabbit
Clonality	Monoclonal
Isotype	Rabbit IgG
Purification	Affinity-chromatography
Applications	WB IP
Species Reactivity	Human Mouse Rat
Specificity	HEC1 Antibody detects endogenous levels of total HEC1
Immunogen Description	A synthesized peptide derived from human HEC1
Other Names	HEC; HsHec1; hsNDC80; Kinetochores protein Hec1; Kinetochores-associated protein 2; KNTC2; ndc80; TID3;
Accession No.	Uniprot:O14777
Uniprot	O14777
Calculated MW	74kDa
Formulation	Rabbit IgG in phosphate buffered saline , pH 7.4, 150mM NaCl, 0.02% sodium azide and 50% glycerol.
Storage	Store at +4 $\Lambda$ C short term. Store at -20 $\Lambda$ C long term. Avoid freeze / thaw cycle.

## Application Details

WB:1:1000~1:5000IP:1:50

## Images



Western blot analysis of HEC1 expression in Jurkat cell lysate.

## Product Description

Acts as a component of the essential kinetochores-associated NDC80 complex, which is required for chromosome segregation and spindle checkpoint activity. Required for kinetochores integrity and the organization of stable microtubule binding sites in the outer plate of the kinetochores.

---

Note: This product is for in vitro research use only