

## CD209 Rabbit mAb

Catalog No: #56214

Package Size: #56214-1 50ul #56214-2 100ul

Orders: order@signalwayantibody.com

Support: tech@signalwayantibody.com

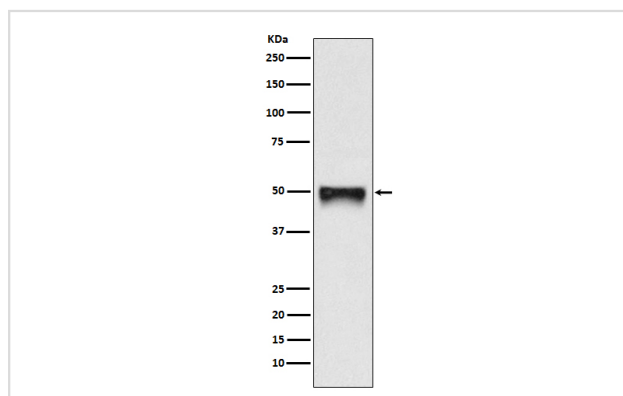
## Description

Product Name	CD209 Rabbit mAb
Host Species	Rabbit
Clonality	Monoclonal
Isotype	Rabbit IgG
Purification	Affinity-chromatography
Applications	WB
Species Reactivity	Human
Specificity	CD209 Antibody detects endogenous levels of total CD209
Immunogen Description	A synthesized peptide derived from human CD209
Other Names	CD209 antigen-like protein A; CDSIGN; CIRE; CLEC4L; DCSIGN; Dendritic cell specific ICAM 3 grabbing nonintegrin 1; HIV GP120 Binding Protein; SIGN-R1; SIGNR5;
Accession No.	Uniprot:Q9NNX6
Uniprot	Q9NNX6
Calculated MW	50kDa
Formulation	Rabbit IgG in phosphate buffered saline , pH 7.4, 150mM NaCl, 0.02% sodium azide and 50% glycerol.
Storage	Store at +4ℳ C short term. Store at -20ℳ C long term. Avoid freeze / thaw cycle.

## Application Details

WB:1:500~1:2000

## Images



Western blot analysis of CD209 expression in HACAT cell lysate.

## Product Description

Pathogen-recognition receptor expressed on the surface of immature dendritic cells (DCs) and involved in initiation of primary immune response. Thought to mediate the endocytosis of pathogens which are subsequently degraded in lysosomal compartments.

---

Note: This product is for in vitro research use only