

CD42b Rabbit mAb

Catalog No: #56219

Package Size: #56219-1 50ul #56219-2 100ul

Orders: order@signalwayantibody.com

Support: tech@signalwayantibody.com

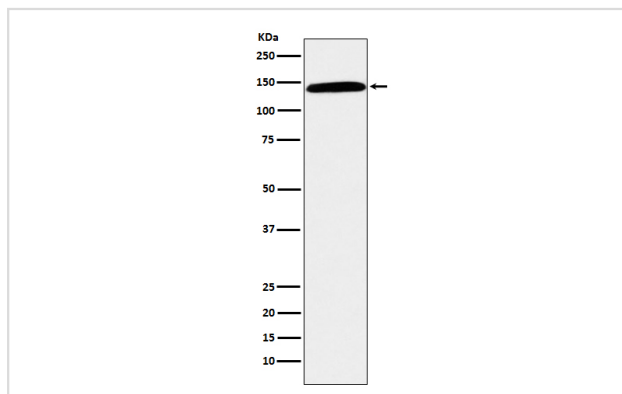
Description

Product Name	CD42b Rabbit mAb
Host Species	Rabbit
Clonality	Monoclonal
Isotype	Rabbit IgG
Purification	Affinity-chromatography
Applications	WB IHC
Species Reactivity	Human
Specificity	CD42b Antibody detects endogenous levels of total CD42b
Immunogen Description	A synthesized peptide derived from human CD42b
Other Names	Antigen CD42b alpha; BDPLT1; BDPLT3; BSS; CD42b alpha; DBPLT3; Glycoprotein Ibalpha; GP Ib alpha; GP1B; GP1BA; GPIb alpha; GPIbA; VWDP;
Accession No.	Uniprot:P07359
Uniprot	P07359
Calculated MW	143kDa
Formulation	Rabbit IgG in phosphate buffered saline , pH 7.4, 150mM NaCl, 0.02% sodium azide and 50% glycerol.
Storage	Store at +4 Λ C short term. Store at -20 Λ C long term. Avoid freeze / thaw cycle.

Application Details

WB:1:1000~1:5000IHC:1:50~1:200

Images



Western blot analysis of CD42b expression in human spleen lysate.

Product Description

CD42b is a platelet activation marker involved in the process of coagulation as an aggregating factor. It interacts with extracellular matrix as well as with adhesion molecules. Its expression and activation seems to be regulated by VEGF and PDGF.

Note: This product is for in vitro research use only