

## DDR2 Rabbit mAb

Catalog No: #56221

Package Size: #56221-1 50ul #56221-2 100ul

Orders: order@signalwayantibody.com

Support: tech@signalwayantibody.com

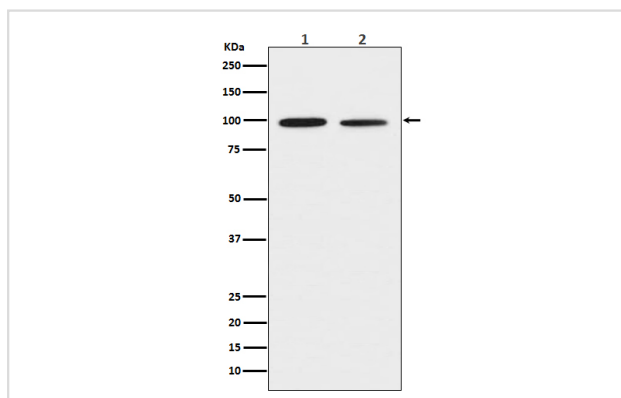
## Description

Product Name	DDR2 Rabbit mAb
Host Species	Rabbit
Clonality	Monoclonal
Isotype	Rabbit IgG
Purification	Affinity-chromatography
Applications	WB
Species Reactivity	Human Mouse Rat
Specificity	DDR2 Antibody detects endogenous levels of total DDR2
Immunogen Description	A synthesized peptide derived from human DDR2
Other Names	CD167b; NTRKR3; Receptor related 3; TKT;
Accession No.	Uniprot:Q16832
Uniprot	Q16832
Calculated MW	97kDa
Formulation	Rabbit IgG in phosphate buffered saline , pH 7.4, 150mM NaCl, 0.02% sodium azide and 50% glycerol.
Storage	Store at +4Λ C short term. Store at -20Λ C long term. Avoid freeze / thaw cycle.

## Application Details

WB: 1:500~1:2000

## Images



Western blot analysis of DDR2 expression in (1) Jurkat cell lysate; (2) NIH/3T3 cell lysate.

## Product Description

This tyrosine kinase receptor for fibrillar collagen mediates fibroblast migration and proliferation. Contributes to cutaneous wound healing.

---

Note: This product is for in vitro research use only