

## RASSF1 Rabbit mAb

Catalog No: #56222

Package Size: #56222-1 50ul #56222-2 100ul

Orders: order@signalwayantibody.com

Support: tech@signalwayantibody.com

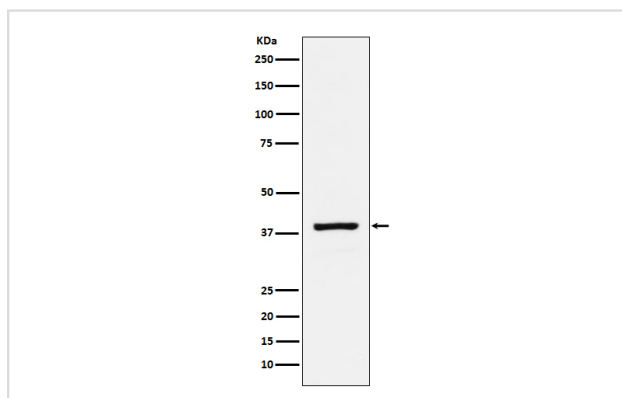
## Description

Product Name	RASSF1 Rabbit mAb
Host Species	Rabbit
Clonality	Monoclonal
Isotype	Rabbit IgG
Purification	Affinity-chromatography
Applications	WB IHC
Species Reactivity	Human
Specificity	RASSF1 Antibody detects endogenous levels of total RASSF1
Immunogen Description	A synthesized peptide derived from human RASSF1
Other Names	NORE2A;
Accession No.	Uniprot:Q9NS23
Uniprot	Q9NS23
Calculated MW	39kDa
Formulation	Rabbit IgG in phosphate buffered saline , pH 7.4, 150mM NaCl, 0.02% sodium azide and 50% glycerol.
Storage	Store at +4Λ C short term. Store at -20Λ C long term. Avoid freeze / thaw cycle.

## Application Details

WB:1:500~1:2000IHC:1:50~1:200

## Images



Western blot analysis of RASSF1 expression in HeLa cell lysate.

## Product Description

Potential tumor suppressor. Required for death receptor-dependent apoptosis. Mediates activation of STK3/MST2 and STK4/MST1 during Fas-induced apoptosis by preventing their dephosphorylation. When associated with MOAP1, promotes BAX conformational change and translocation to mitochondrial membranes in response to TNF and TNFSF10 stimulation.

---

Note: This product is for in vitro research use only